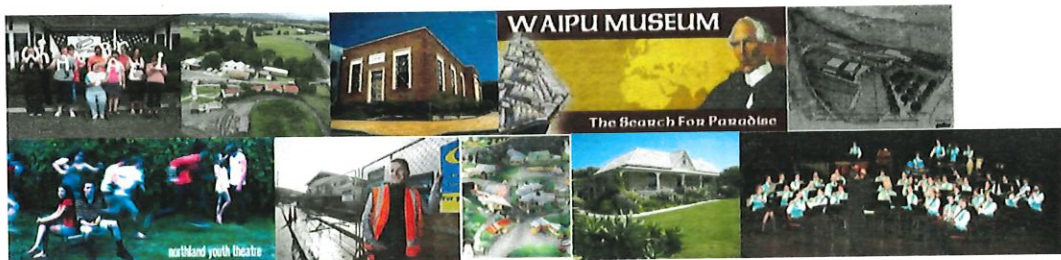


# Whangarei Culture, Heritage and Arts Sector's Capital Projects Collaboration 2011 – 2020

November 2011



## **Whangarei Culture, Heritage and Arts Sector's Capital Projects Collaboration 2011-2020**

The Capital Projects Collaboration is a unique concept that has evolved from extensive consultation with Whangarei District's culture, heritage and arts sector between 2009 and the present.

Through a partnership with CHART and its member affiliates it was recognised that it was timely to:

- work with sector groupings rather than individual organisations whenever possible; and
- have a closer understanding of local community and sector dynamics in order to better inform their funding decisions

It is also apparent that funds are best utilised when a community's heritage, culture and arts sector is cohesive and agrees on strategic priorities. The Capital Projects Collaboration is both our local sector's response to funders' preferences, and a demonstration of the sector's commitment to collaboration as a means of achieving inter-related and often shared objectives.

The following report introduces the Collaboration's ten member organisations and their projects, the project prioritisation process, and the roles of the Advisory Group and CHART Board in deciding the priority in which they and the Collaboration members will support ten projects through to completion by 2020.

As a result of this process, culture, heritage and arts sectors in other centres are already showing interest in the Capital Projects Collaboration process. The Collaboration plan clearly has the potential to deliver multiple benefits, notably the opportunity for sector organisations to:

- streamline and align funding applications and timeframes
- give confidence to funders that projects are supported by the community
- maximise the leverage of available funding through careful joint planning, and
- grow the capability of local culture, heritage and arts organisations in times of financial constraint

I would like to acknowledge the Whangarei consultancy company Venture Group Ltd. that has worked closely with CHART on developing the prioritisation process. I also acknowledge the CHART Board for its support for this exciting collaboration initiative – the first of its size in Whangarei's culture, heritage and arts sector. Most importantly however, I need to acknowledge the current ten organisations who are 'walking the talk' of collaboration through their commitment to the Capital Projects Plan.



Chris Carey, CHART CEO  
November 2011

## **1. The Project Prioritisation Process**

Private, corporate, and government funders of culture, heritage and arts sector organisations express a preference to work with sector groupings, and have signalled dissatisfaction with the inefficiency associated with funding seemingly similar groups which are trying to achieve disparate outcomes in isolation, and with a general lack of sector continuity.

In times of increasing financial constraint and accountability, fund trustees and directors are seeking a higher level of confidence that funds allocated are utilised to best advantage by local communities that work together towards agreed strategic priorities.

Hence the Whangarei culture, heritage and arts sector identified the importance of prioritising key capital projects to move forward collaboratively. They approached CHART (Culture, Heritage, Arts Resource Trust), the central institution for sector support to develop a scoring model that ranks the key projects in order of merit to be supported over the next ten years. CHART contracted Venture Group, a local company conducting social research to develop a self-assessment tool focused on general business capability to capture the 'State of Play' of each of the ten participating organisations and their proposed projects. Venture Group also developed a review tool for CHART to use during face-to-face visits with each of the organisations once they had completed their self-assessments. The compiled data was then passed back to Venture Group for analysis, moderation, and collation for use in this summary report and in the Advisory Group prioritisation process.

Each organisation was awarded two grades: an Organisation Grade that reflects its general business capability, and a Project Grade, which reflects the organisation's readiness to implement its project.<sup>1</sup>

## **2. The role of the Advisory Committee**

Each of the ten collaborating stakeholders was asked to suggest three advisory members from their community – central participants within their organisation or people from the wider community with particular skills or knowledge of governance, management or sector issues – to form the Advisory Committee. Separate invitations included a Northtec arts representative from senior management as well as for Maori liaison with Whangarei District Council and Te Puni Kokiri.

At least one member of each organisation's representatives is expected to attend each Advisory Meeting to review the Collaboration Project priority list in relation to the progress of individual projects, to represent sector views, to promote a project, or to make decisions as an Advisory Group member on matters affecting the sector. They are to report regularly to the CHART Board on the Collaboration Project for approval.

The Advisory Group's first task has been to agree on the Priority List below which identifies the ten collaboration projects in order of their Project Grade for completion through to 2020.

---

<sup>1</sup> The grades are 'snapshots in time' of an organisation's capability across these areas in relation to the Capital Projects Collaboration only. They are neither, in any sense, a judgement on nor the final picture of an organisation's current or future capability, or capability in relation to the other roles it carries out within the sector or community. The grades are subject to an annual review.

### **3. The role of the CHART Board**

1. To approve a Collaboration Project Funding Plan through to 2020 that covers the ten prioritised projects. The Plan will identify the timeframes, funding requirements, potential funders, and links or alignments between member Collaboration Projects, for use as a funding plan for collaborating organisations and potential funders.
2. To submit the Collaboration Project Funding Plan to the Whangarei District Council.
3. To authorise the use of the Collaboration Project Funding Plan by Collaboration members in funding applications or reports to local and national heritage and arts funders.
4. To annually report on the Collaboration Project Funding Plan to member Collaboration Projects, Whangarei District Council, and the District's heritage, culture and arts sector.

#### 4. Summary Data: The Priority List as per October 2011<sup>2</sup>

Organisation:	Project/Project Stages:
1. The Papermill	Renovation of new premises, relocation
2. Waipu Museum	Extensions and renovations
3. Old Library Community Arts Centre	Renovations
4. Whangarei Museum & Kiwi North	Building upgrade and visitor orientation
5. Quarry Arts Centre	New multi-purpose building, live-in studios
6. Northland Youth Theatre	Renovations of currently leased building, a new purpose-built theatre ideal
7. Hihiaua Cultural Trust	A new Maori Cultural Centre on the Hihiaua Peninsula
8. Whangarei Youth Music	A proper storage facility, purpose-built building ideal to share with other groups
9. NSA/Reyburn House	Arts storage, preservation, management support
10. Whangarei Art Museum	A purpose-built Art Museum <sup>3</sup> for the city

<sup>2</sup> Detailed data is available upon request from CHART

<sup>3</sup> Project details not provided to date

## Appendix 1: The sector consultation and the formation of CHART

Between November 2009 and April 2010 and with support from the Whangarei District Council, a robust consultation process was undertaken that identified strong sector support for a collaborative approach. The former Arts Promotion Trust (APT) worked with key stakeholders in the culture, heritage and arts sector to explore the idea of a new entity called the Culture, Heritage and Arts Resource Trust (CHART), whose role would be to advocate for the sector in the Whangarei District.

A vision of Whangarei as an Arts Culture and Heritage Destination was developed through a comprehensive research process which included questionnaires and workshops with the sector. Ten organisations were identified as being pivotal to this initiative:

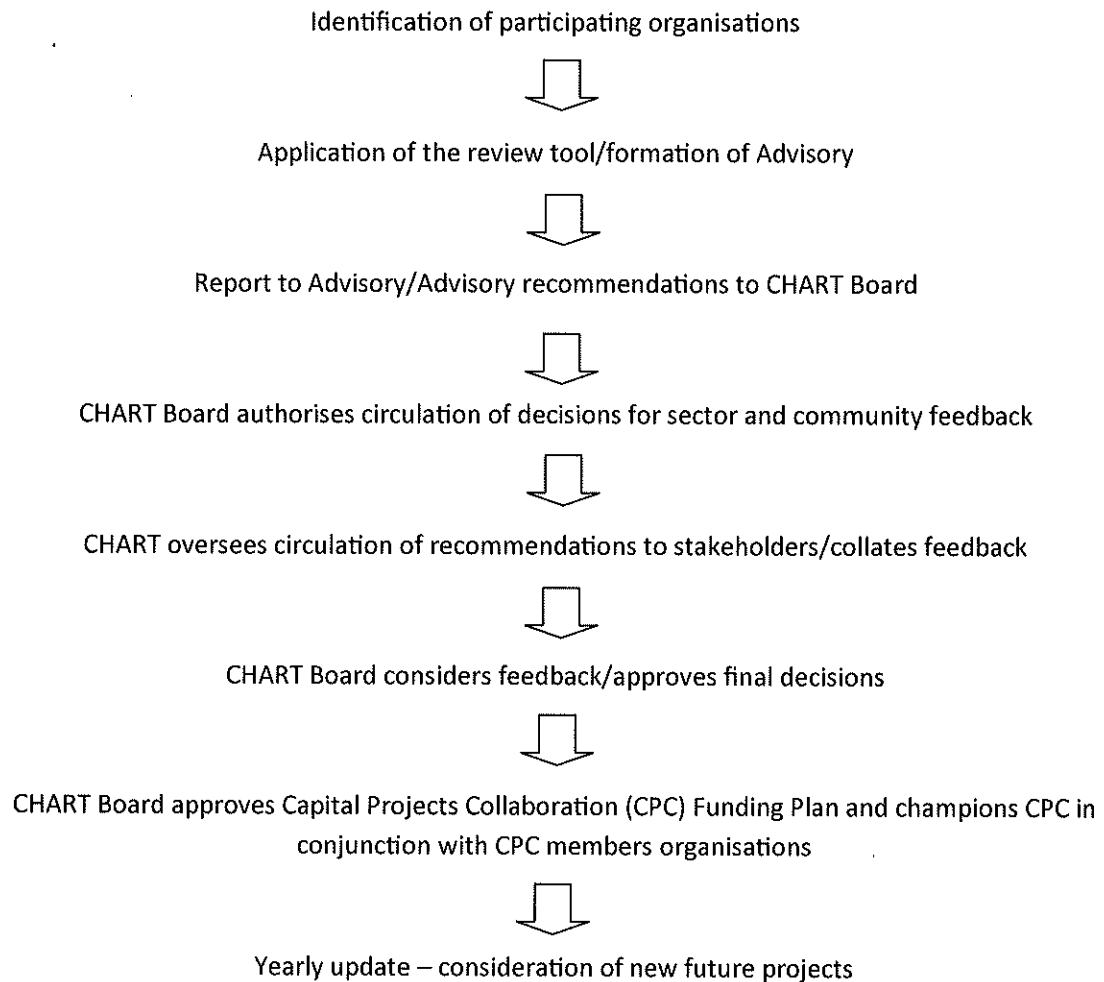
Whangarei Youth Music	Waipu Museum
Whangarei Museum & Kiwi North	Whangarei Art Museum
SMAC Dance Company	Northland Society of Arts/Reyburn House
Northland Society of Authors	Hihiaua Cultural Trust
Northland Youth Theatre	Quarry Arts Centre

Northtec, Northland's largest tertiary provider, was also involved in the consultation as a key stakeholder.

Culture, Heritage and Arts Resource Trust - CHART - took over from APT in July 2010 and is now the organisation that offers the sector:

- Strong arts leadership and infrastructure
- Consistent organisational support, e.g. equitable funding, support with governance
- Arts-focused business and management training
- Affordable venues for community use
- A collaborative, cooperative and forward thinking approach

## Appendix 2: The Capital Project Collaboration Process



### **Appendix 3: Benefits of the Advisory model**

- Enables stakeholder organisations to invite local community people who have expressed an interest to engage on behalf of the wider sector.
- Positions sector-based decision making above lobbying interests.
- Provides a new opportunity for involvement at a sector, rather than organisation level for people, which allows them to bypass organisation-based differences/ biases/etc.
- Gives a 'third string' to the sector – CHART relationship.
- Provides a new voice for CHART and sector stakeholders.
- Engages new people in governance and community activity for future needs.
- Spreads the word of CHART and sector collaboration within and beyond the heritage and arts sector.
- Allows for CHART and sector groups to broaden their information and marketing databases.
- Addresses quorum and continuity issues related to representation – organisations are able to negotiate who attends full advisory meetings.



## **Appendix 4: The current participating organisations and their proposed projects**

### **1. The Papermill:**

The Papermill is a creative space established in Whangarei in 1989 to train people in the art of papermaking in a nurturing, supportive and educational environment. It provides a creative, structured workspace for up to 20 people with intellectual, physical and brain injury-related disabilities. It is, however, a vehicle for something bigger – by providing an interface, it demonstrates to society that people with disabilities are as able in some areas as people without disabilities. The Papermill has recently acquired new premises in Kamo Rd, having raised \$475,000 towards the \$760,000 required for this purpose and to cover relocation costs. Its project is the refurbishment of its new premises to make it 'fit for purpose' for its clients and many visitors.

Estimated project cost \$235,000.

### **2. Waipu Museum:**

Waipu Museum aims to enable visitors to discover the dramatic history of one of the world's most remarkable migrations. The Museum contains Scottish Highland immigrant history, records, imagery, objects and audio visuals. The Museum's project is to create additional revenue streams by erecting a barn workshop, extending the Museum to include more display space, building a café and multi-purpose space for use as a conference, wedding or performance venue, and restoring the old library/lodge building and the old Manse.

Estimated project cost \$1,355,000.

### **3. Old Library Community Arts Centre:**

Located in a 1930s historical building, formerly the Whangarei Public Library on Rust Avenue, the Old Library is now operating as a community arts centre and houses exhibitions, theatre productions, performances and a variety of visual arts activities. The project aims to increase the Old Library's revenue generation through the redevelopment of parts of the building (e.g. toilets and studio spaces) to attract new tenants and enhance the quality of existing users.

Estimated project cost \$100,000.

### **4. Whangarei Museum & Kiwi North:**

The complex of Museum, Kiwi House and Heritage Park is located outside the city centre on SH14. The Museum showcases special collections and exhibitions including early settler collections. Kiwi North transforms day into night for a chance to view New Zealand's most famous native bird, the Kiwi. Whangarei Museum has completed Stage One of its ten year plan. Its project covers Stage Two – upgrading the museum building (storage, roof, etc.), and Stage Three – visitor signage/orientation for the museum grounds.

Estimated project cost Stage Two \$1,000,000; Stage Three \$20,000. Total cost \$1,020,000.

## **5. Quarry Arts Centre:**

Open to the public 7 days a week, visitors can stroll through the grounds and see resident artists in their studios, purchase hand-crafted goods directly from local artists, view exhibitions at the Yvonne Rust Gallery, bring the family for a picnic by the waterfall or take a walk in the Coronation Reserve up to the pa site or over the hill to the Quarry Subtropical Garden. The project is the completion of Stage Two of the Quarry's Capital Development Plan, covering the construction of a new building to house a café and new multi-purpose function rooms (for use as spaces for workshops, events, performance art, hireage, etc), and possibly more live-in studios for emerging artists.

Estimated project cost \$2,000,000-3,000,000.

## **6. Northland Youth Theatre:**

Northland Youth Theatre is a Charitable Trust which focuses on training, supporting and educating young people in Film and Theatre. They place a strong emphasis on achieving high production standards and employing industry professionals and have done for over twenty-five years. Many of their Alumni have gone on to work professionally in NZ and around the globe both onstage and behind it. They have recently taken on an artistic director at their Bank Street premises and are expanding rapidly. NYT's short term goal is to finish renovating and fitting out the Bank Street studio. Their long term goal is to secure a suitable performance venue.

Estimated project cost: 1. Complete renovation and fit out: \$15,000, 2. Performance Venue: \$1,000,000+

## **7. Hihiaua Cultural Trust:**

The Hihiaua Trust has been established with the vision to create the Hihiaua Cultural Centre, a high quality centre of excellence to display, demonstrate and promote Whangarei's Maori culture and arts, situated on the Hihiaua Peninsula. The Cultural Centre will be inclusive, innovative, and highly interactive. Its plans cover four successive stages of construction – Boatshed refurbishment; Exhibition and Conference space; Theatre and Landscaping; Display and Waka storage.

Estimated project cost: Stage Zero \$1,887,737; Stage One \$12,196,811; Stage Two \$3,334,352; Stage Three: \$4,520,429. Total cost \$21,939,330.<sup>4</sup>

## **8. Whangarei Youth Music:**

Whangarei Youth Music is a self funding, family orientated organisation created in 1980 to provide opportunities for the young people of Whangarei to develop their musical skills and to experience the passion of playing together. Youth Music is currently renting premises at Kamo High School. Its project is to establish a permanent home for WYM in a shared community facility that includes a practice venue and secure, easily accessible storage facility, as well as (best case scenario) a performance venue.

Estimated project cost yet to be developed.

---

<sup>4</sup> Provisional figures from Business Case and Feasibility Study by Keys Property Consultancy Ltd, November 2010

#### **9. Northland Society of Arts (NSA)/Reyburn House:**

Reyburn House is home of the Northland Society of Arts and its art collection, as well as being a New Zealand Historic Places Trust Category 2 listing. The gracious, lovingly preserved colonial building is Whangarei's oldest house and lies beside the Hatea River in the heart of Whangarei. The key project will focus on the establishment of an archival area, temperature controlled environment, suitable storage, and infrastructural development of the heritage building, plus professional management support for funding arrangements.

Estimated project cost \$1,000,000.

#### **10. Whangarei Art Museum:**

The Whangarei Art Museum is the public gallery of the district and the only public art gallery in Northland. It opened in June 1996 in a historical arts and crafts building in Cafler Park and is currently in the process of relocating to the Town Basin (former Hubands Building). Its project is to construct a purpose-built Art Museum for Whangarei City.

Estimated project cost \$15,000,000.

## Appendix 5: One page overview of the organisation's projects

### The Papermill:

#### Integrating The Papermill into the business community of Whangarei



#### Who are we?

The Papermill is a long-standing charitable trust, located in Whangarei that was established to provide a safe, creative, interactive environment for artists with disabilities.

Learning unique skills leads to increased self esteem and a positive attitude to life.

The programme assists all involved in accepting personal responsibility as far as possible for their own well-being and the direction of their lives.

The Papermill is, however, a vehicle for something bigger – by providing an interface, it demonstrates to society that people with disabilities are as able in some areas as people without disabilities.

Many people's views of the place of the disabled in our community are changed for the better after they have visited our facility or participated in papermaking workshops that are led by our clients. Our ultimate goal is for our clients to be offered work experience or employment, providing full integration into society.

A cornerstone of the trust's mission and activities is engagement and collaboration with the Whangarei community. What this means is that, since its inception, the social and education benefits of the trust have been felt by a large number of people other than our clients.

#### What is our project?

Due to Council plans to redevelop the Blue Goose area where the Papermill is presently situated it is necessary to relocate to ensure a sustainable future and increase the level of engagement with the Whangarei community.

There has been significant progress made in achieving this objective, namely:

- another charitable trust has purchased a residential property within the Whangarei urban area and will make it available to our organisation on a 30-year lease at less than half our current rental
- the focus is now on the second part of the relocation project, namely that the property needs to be refurbished to make it "fit for purpose" for our clients and, to a lesser extent, the many visitors who make use of our facilities
- the trust has undertaken much of the necessary planning and consenting work necessary before the substantial refurbishments can be commenced
- the trust has already secured some grant funding as well as being able to use some of its own development budget however we are seeking a further \$235,000 to complete the second stage of this relocation project.

# Waipu Museum

## Waipu Museum Long Term Plan Overview

Waipu Museum has a 'foundation' responsibility to preserve and maintain the history of one of the world's most extraordinary global migrations. In order to do this it needs to create a dynamic Tourist attraction capable of attracting sufficient numbers of visitors to ensure its ongoing economic viability.

Hand in hand with the mission of building visitor numbers is the quest of continuing to develop the museum as a cultural 'hub' of the community maintaining wide ranging cultural relevance and connections both locally, and internationally.

In 2008 The Waipu Museum took its first step on the road to realizing these ambitions, by redeveloping its central exhibition. It was one of three finalists in the 2009 Museums Aotearoa Innovation Achievement Awards and is now recognized as one of New Zealand's finest small Museums!

## Next Steps

### Build a barn/workshop/storage facility - \$110,000-00 (asap)

- Attract male volunteers –establish a 'men's shed', set up 'Traditional Boat Craft/clinker dinghy building as a focus for learning for young and old!
- Create a Facility for a workshop and storage from which we can restore two important heritage buildings, The Old Manse and Old Library Building.
- Provide a Display area for large artifacts not currently displayed - Horse drawn Phaeton, Clinker fishing boat, Old Whisky Still and more!
- Provide much needed storage for museum to free up Old Library building for shifting.

2) **Initial restoration work on Old Manse** built in 1871 for its heritage value and as Tourist attraction.

First stage of this: - paint the outside and upgrade the roof to ensure it is weather tight. Build a picket fence, making it viewable from the outside as part of a visitor walk. **\$50,000-00 (asap)**

3) **Create a visitor walkway** to the Barn, and the Manse which will eventually link up to the council's planned esplanade walk to and along the river, the site where the first settlers originally landed. The tourist walkway will be designed to incorporate special areas to include story boards to tell local stories eg The history of education in Waipu etc **\$30,000-00 – (asap)**

4) **Cultural events** management including Production of Grand Pageant 2013 and annual Art n Tartan Wearable Art awards. Largely self funding but will seek underwriting for Pageant.

4) **Shift Old Library building to Glebe area to create a small performance/exhibition space/digital cinema for Community Arts Space. \$150,000-00 ( Long term )**

5) **An extension** at rear of Museum to create extra museum exhibition space, new Art exhibition space, café/performance space and wedding/function venue. Beautiful concept plans have been developed for what will become one day an exceptional local asset and tourist drawcard! **\$1,000,000-00 (long term)**

## Old Library Community Arts Centre:

*"Well may it be called Whangarei's home of culture, and the town is fortunate to have in its midst men of vision who could conceive and carry into effect, with such impressive and dignified results the planning of what will be recognised as one of the most modern and artistic buildings of its kind in the southern Hemisphere." – The Northern Advocate, November 12, 1936*

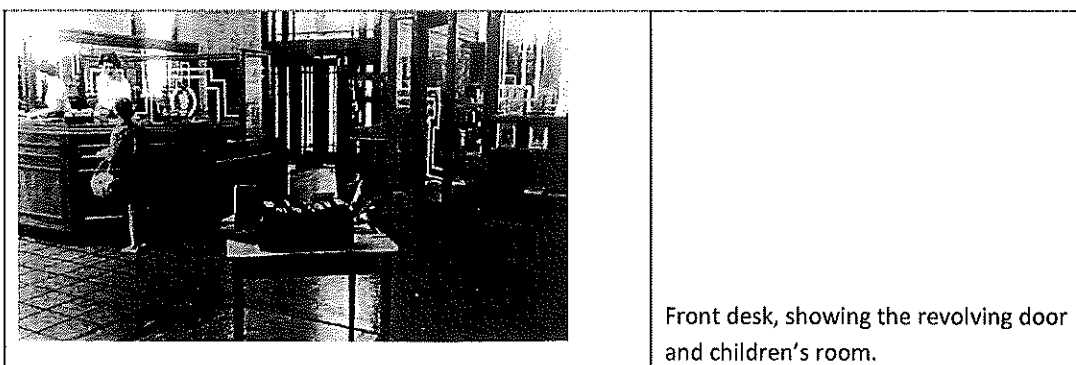
### Renovation of Old Library, Historic Places Trust 7539

#### Overview

The Old Library was opened in 1936 to the design of Horace Massey and Alfred Morgan who were subsequently awarded the New Zealand Institute of Architects gold medal for the design.

The building has always been associated with the people of Whangarei who approved raising the loan for the new building. Having been through several additions, 1964 and 1980s, it now serves the people of Whangarei in the form of the town's only Community Art Centre.

Category II Historic Places Trust registration incorporates the 1936 and 1964 parts of the building, their fixtures and fittings. Simply stated, this is the brick part of the building and all heritage fittings and fixtures inside that area. The later 1980s addition is not subject to restrictions and does not form a part of the renovation project.



Front desk, showing the revolving door and children's room.

#### The Project

The Old Library building has seen extension renovations since its opening in 1936. The 1980 addition included some changes to the original building, including new toilets and the building of the mezzanine. Recent renovations have seen the rebuilding of new toilets and the removal of the mezzanine. The toilet facilities now boast art deco styling and sufficient facilities to cater for the 350 person maximum building capacity. The removal of the mezzanine will allow for more flexible use of the building while opening up the Main Hall, creating a grander presence.

#### High priority renovation still required

The Shutter Room	\$12,000
Kitchen	\$60,000
Off the Cuff Gallery	\$20,000
New Office	\$ 8,000
Bar	\$10,000
Reception	\$12,000
<b>Total</b>	<b>\$122,000</b>

## Whangarei Museum & Kiwi North:

This is a summary of Kiwi North's Proposed Developments for the period 2011-2016 as per the Whangarei Museum & Heritage Park Trust's Strategic Plan.

Stage Two Developments include installing an internal link between the new Kiwi House Building that was opened in January 2011 and the existing Museum building, which also needs extensive redevelopment. The approximate cost for Stage Two is \$1,000,000.

**Table 1: Stage 2, Redeveloping the museum and improving disability access**

Internal access & museum redevelopment	Description	\$
Utilities	IT & Security, includes server room	50,000
	Environment Control for collections, public and admin spaces	100,000
Ground level	Internal lift and walkway plus receiving area	100,000
	Collections storage e.g. small, medium, large items, archives	120,000
Level One	Develop museum entrance from internal lift, exhibition redevelopment including lights, public programmes space	200,000
	Toilets, museum foyer visitor lounge and administration area	50,000
Mezzanine Floor	Meeting space, staff room, storage	80,000
Café extension and children's playground	Remove portacom building and replace with kiosk style kitchen/sales counter (seasonal)	80,000
Roof	Replace	220,000
Building Strengthening	As required	
<b>Sub-total</b>		<b>1,000,000</b>

Stage Three Developments are focused on Heritage Park Interpretation and directional signage for visitor orientation and car parking. The approximate cost for Stage Three developments is \$30,000.

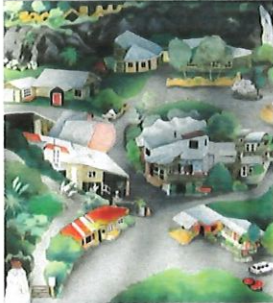
**Table 2: Stage 3, Improved visitor experience on the Heritage Park**

Interpretation, first stage	Location	Description	\$
Heritage Walk	Heritage Park including Clubs	Visitor Interpretation of Historic Buildings, Club collections, museum collections on the Park	20,000
Directional Signage	Whole property, including Clubs	Car parking, visitor flow, building labels & function, instructions, warnings e.g. Health & Safety	10,000
<b>Sub-total</b>			<b>30,000</b>

These plans do not include other infrastructure developments on the property such as the continued refurbishment of the Education Centre, the need to improve facilities such as public toilets, the refurbishment of the old Kiwi House into a meeting/AV room, and continued conservation of the Clarke Homestead. Nor does it include developments undertaken by the 13 Clubs resident on the Heritage Park Grounds such as a new planetarium for the Observatory and train track extensions for both the large and small trains.

## Quarry Arts Centre:

# Quarry Arts Centre



Nurturing the Creative Spirit of Northland since 1982

Whakatupua Te Puna  
Waihangā O Te Tai Tokerau

While many cities have their standard art galleries, museums and shops, there is nothing else like the Quarry Arts Centre, with its natural bush clad environment, quirky architecture and authenticity. It's a unique asset in which the local community can take justifiable pride. The fact that the Quarry Arts Centre is unique makes it a destination in its own right.

Creative development, nurturing and learning is a priority of the Northland Craft Trust and so the Quarry Arts Centre hosts an array of workshops that cover many disciplines from ceramics and earthbuilding to painting and life drawing plus anything in between. It also currently rents out 11 day studios and 2 live-in studios to artists at very affordable rates.

The Quarry Arts Centre has historically and will continue to hold a significant place in the Northland Art Sector. It has a solid following with over 1000 Friends of the Quarry

Northland Craft Trust is in a very exciting stage of moving forward. With the recent completion of the brand new Yvonne Rust community gallery and information hub, the Quarry Arts Centre is about to embark on stage two of our ten year capital development plan, to replace the building, affectionately known as "the dungeon" with improved large multi purpose spaces, group teaching spaces, new artist studios and an on-site café.

Whangarei District council has stated this building must come down as it no longer complies with building regulations and is not safe - therefore the largest building on site is currently only being used for storage for which approval has been given until early 2013.

The development of large multi-purpose spaces which can be used for workshops as well as hired out for events and corporate functions and new studio spaces will provide the creative community with suitable, functional, safe areas to work, give public demonstrations and tutor classes. Many of the current studios are coming to the end of their lifespan and having modern, purpose built facilities will be a huge asset for both the Quarry Arts Centre and resident artists.

With studios of high quality, emerging and established artists will be able to work in a comfortable, healthy environment. This will allow us to attract high caliber national and international artists to spend time at the Quarry Arts Centre working and tutoring. This activity will not only provide a stepping stone for emerging artists to earn a living from their art but also a vibrant learning environment for local and visiting students. This dynamic site will then truly be a "must see" destination for tourists and international art lovers.

A café facility will cater for the growing visitor numbers. At present when tourists arrive there are not adequate refreshments available. This site offers an excellent place, away from traffic in a stimulating and relaxing environment for visitors to spend time as they travel around or through Whangarei.

The next evolution of the Quarry Arts Centre is going to be a modern but unique facility that will be an active element in local, national and international artistic communities, as well as forwarding Whangarei's reputation as a famous arts and culture destination.

We have a solid business structure with a core group of Trustees and Community Manager providing excellent governance and the ability to fiscally manage this stage two project, as was proven by the achievement of stage one of our capital development plan, the new gallery and info hub. The building was completed on budget and on time in August 2011.

The Trust is capable of sustaining the new building and has the correct strategy in place to grow steadily over the coming years. Northland Craft Trust aims to remain and develop as a nucleus of resources and a location for resident artists and subsidiary tenants to work in their chosen medium in a dynamic centre for training and development of new and working artists and offer the community as a whole an interactive art centre.



Aerial view of the Quarry Arts Centre nestled into the Western hills.



The 'Dungeon' that will be removed to make way for Stage 2 of the Capital Development



**Northland Youth Theatre:**



This document expresses Northland Youth Theatre's (NYT) enthusiasm for the proposed redevelopment of Forum North.

The Northland Youth Theatre has been operating in Whangarei for over 25 years as a hatchery for Northland talent. We are a charitable trust dedicated to benefiting the community generally, in particular by supporting, educating and training young people in Northland in the art of theatre.

Currently we have no dedicated studio theatre space in Whangarei that is central, flexible and intimate enough to host our productions. Consequently we use ad-hoc spaces that are ill-equipped and require much transformation.

We understand the redevelopment of Forum North would include a fully equipped studio theatre alongside a new main theatre.

We currently reside in a studio space on Bank Street in central Whangarei which is not suitable for productions and which we are quickly out-growing.

NYT is extremely interested in using the proposed studio as our main venue for performance. We anticipate using the space for:

- Three main annual productions: Junior, Intermediate and Senior.
- Ten minute play festivals, 24hr drama competitions & youth generated productions.
- Theatre workshops.

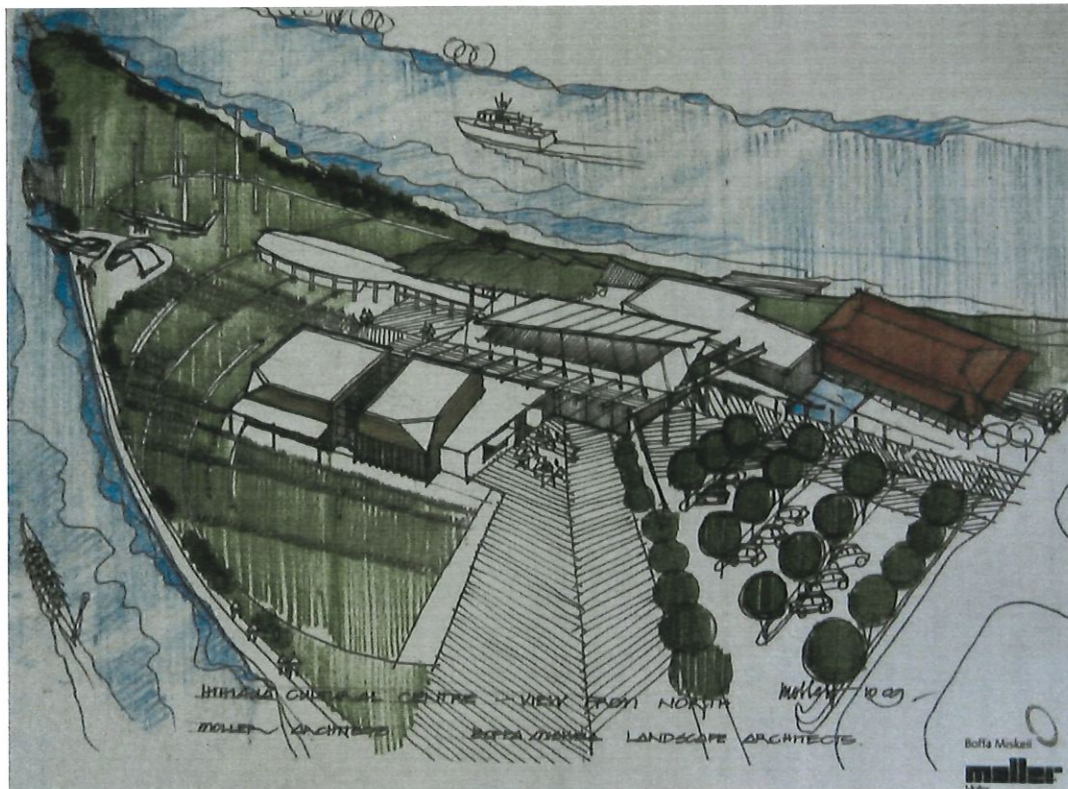
The proposed redevelopment would also enable NYT to expand its programme to encompass the backstage and technical aspects of running a fully functioning theatre space.

We understand that many groups with an interest in the arts will be using the proposed space and it is our hope that the redeveloped Forum North complex will be a nexus for the creative spirit in Northland. We envision working alongside and collaborating with groups such as the Youth Orchestra, Whangarei Youth Music, Northtec and other artists to broaden and deepen the voice of Northland youth.

Regards,

George Skuse,  
Chairman

## Hihiaua Cultural Centre Trust:



### He Moemoea (The Vision)

The Hihiaua Cultural Centre Trust was formed in 2008 to carry forward the vision of our elders for a living expression of matauranga Maori to stand in the Whangarei Town Basin. The embers of this vision were fanned by the creation of the Waka & Wave sculpture on the Hihiaua peninsula. The embers have been flared into tangible plans to “develop a centre showcasing the best of Maori culture, arts and technology while embracing people of all cultures in an atmosphere of mutual respect and experiential learning.....”.

The purposes of the trust are to establish support, administer, advance and promote a high-quality centre of excellence to display and promote Maori culture and arts to the Whangarei community at large and to visitors to the city. It will facilitate education and cross-cultural awareness and understanding through various forms of Maori arts and technology.

Maori make up more than 30% of Northland’s population, expected to be 50% by 2020. Half our youth leave school with an inadequate education and there is currently no one place where our history and culture is taught, practiced and celebrated as an important part of our present 21st century multi-cultural society.

The Hihiaua Cultural Centre will be pivotal in lifting the capability of Maori in the region to re-establish our sense of place, purpose and pride while attracting visitors who seek meaningful and authentic interaction with tangata whenua. The centre will also act as a hub to connect people with other arts, tourism and education initiatives in the region.

The Hihiaua Cultural Centre will host local, regional, national and international cultural events - wananga, research, symposia and conferences, theatrical productions, films, festivals and exhibitions.

All people will be welcomed and have opportunities to learn and practice our history, culture and links with the land, the harbour and the ocean through the knowledge of those who came before us and for those who will come after us.

TE TANGATA

TE WHENUA

TE MOANA

WHANGAREI TERENGA PARAOA

### **Whangarei Youth Music:**

Whangarei Youth Music is a community based organisation aiming to provide group and performance music practise for the youth of the Whangarei District. Established in 1980 by music teachers, it aims to provide a place where young players of brass, woodwind, string and percussion can play music as part of a larger group. The founding members also wanted to realise the benefits of playing music and of musicians playing in a group in a nurturing environment.

Whangarei Youth Music has outgrown several venues in its history but currently uses after hours facilities at Kamo High School. With currently 110 playing members and expected to grow to 200+ space is an ongoing issue for our groups. Securing a venue that has enough rooms to be able to accommodate all the groups, teachers and storage has become problematic.



The possibility of a central community space like the Forum North proposal is an ideal solution for our future growth. This would provide a solid “home”.

Whangarei Youth Music is unique in NZ in that we have a wide range of groups for a community based music organisation. This venue would allow WYM to continue its growth, to practise and perform, and also support a vibrant music teaching fraternity.

In the meantime WYM is currently embarking on a program to visit primary and intermediate schools so the youth of today get to experience live performance music from an orchestra and concert band.

As part of introducing young people to music, we took several of our groups to the schools in the Far North in 2010; as a result we have players coming from Kerikeri and Dargaville to play because they don't have the opportunity there.

Music is such a vital part of our culture and community. WYM provides teaching of recorders, the basic reading of music, to award winning performance groups. WYM senior groups have won gold awards at national contest and a number of members have gone on to make music their career; one of our former members is now playing internationally.

WYM's aspires to be seen by the community as a place of sound values where members of the community get to really experience music and music making. This may take the form of being part of a group, conducting or composing pieces to be played. Whangarei has a wealth of talent and a vibrant and growing WYM, but is constrained by facilities that suit these activities.

**Northland Society of Arts/ Reyburn House:**



Reyburn House is the home of the Northland Society of Arts (NSA) and its art collection, as well as being a New Zealand Historic Places Trust Category 2 listing. It is Whangarei's oldest house and lies beside the Hatea River in the heart of Whangarei. Reyburn House is a gracious, lovingly preserved colonial building that is the focus and tourist magnet of the newly refurbished Town Basin precinct.

We are very fortunate to have this house as the home of Northland Society of Arts, with over 230 members and growing. We offer a variety of exhibitions and workshops every month of the year and a gift shop with work constantly changing. For October 2011 we had 790 visitors, most were from overseas and from other parts of New Zealand. NSA Reyburn House is home of The Northland Art Award and The Northland Pottery Award.

**The 'Ten Year Plan'** of NSA Reyburn House involves the overall preservation of the historic house and gardens. It aims for on-going infrastructural and managerial sustainability to recognise the heritage of the building, the gardens and the art society.

It is essential to develop a stable core within the next years that also looks after collection care and the preservation of the building and the permanent collection art archive. This project will focus on security optimisation, the restoration of the area upstairs, promotion/marketing of the place as well as professional management. Reyburn House is currently staffed by unpaid volunteers only that donate their time and commitment.

Estimated project costs: \$1,000,000

## **Whangarei Art Museum:**

### **Project rationale:**

Whangarei Art Museum the first public art museum in Northland opened in June 1996.

Over the past 15 years the art museum has considerably outgrown its premises, and has suffered substantially from inadequate back-of-house facilities; particularly in collection storage and preparatory spaces, staff offices and facilities and all-weather loading access and crate storage. More significantly its location in the seclusion of the Rose Gardens has never allowed the public profile of the art museum to grow, despite a high level of publicity for its programs.

Gallery spaces have not been sufficient to cater for major touring exhibitions, and collections-based displays to be showcased concurrently as the community expect of it.

Fast-tracking of the new art museum project at THE HUB Town Basin early 2011 in for opening during the Rugby World Cup Games in September 2011 meant that many of the funding body's criteria and grant schedules could be met within the timeframe.

It was suggested that a two-staged project timeframe be developed from the outset, to enable the *possibility* of further funding in the following financial years. It is therefore the wish of WAM trustees that the CHART prioritization be for completion of Stage Two at the new premises.

TOTAL COST \$200-300,000

### **Stage 1 The Mair Gallery – National Touring Gallery & Collection Storage - COMPLETED**

### **Stage 2 The Younghusband Gallery - Permanent Collection Gallery and Education Space**

This is currently an exhibition-ready bare-wall space with air-conditioning only ( i.e. not full climate control systems) and some lighting in place (none to museum standards).

WAM wishes to bring Gallery 2 (Younghusband Gallery) to the standard of The Mair Gallery and rebrand galleries one and two within a broader social cultural context than merely 'arts' and a high-end permanent gallery space (i.e. up to ten years). To showcase the historical diversity of creative culture in Whangarei and Northland and celebrate the key events and pivotal role the region has played as a change-maker in the cultural memory of the nation over a thousand years.

This space would include interactive exhibits and timeline of the collection and objects on loan from other institutions to drive a compelling narrative, exploring the first artists to visit from the earliest colonial period to the ground-breaking Northern Maori Project in the 1950's, and major New Zealand artists from the region such as Ralph Hotere, Hone Tuwhare, Seraphine Pick, Shane Cotton, Milan Mkrusich and many others.

40-50 square metres of this space could also be utilized as an education resource centre to allow for LEOTC programs at the art museum which in turn would provide a grants opportunity for WAM for additional services and a dedicated NCEA One Point One exam exhibition annually for schools in the district.

### **Summary**

'Permanent-collection galleries', substantial and flexible touring exhibition spaces, and revenue-generating opportunities are a priority requirement.

Both these spaces would then lend themselves to revenue-generation opportunities, cohesive management and best-practice, allowing for an overall 'branding' of the building as an 'arts experience' space.

The WAM/WDC Tapapa Toi arts strategy states in its executive summary 'Whangarei's economic, cultural and social well-being will be enhanced by a strengthened, well supported and highly valued heritage, culture, arts and creative sector.'

The Strategy for the Sustainable Economic Development of Northland; the Enterprise Northland 'Arts in the Regional Framework' 2005 endorse the need for expansion and growth of the art museum, and the Whangarei "Tapapa Toi – The Cultural Seedbed" 2006 arts culture and heritage strategy, also endorses significant future growth - and suggests a combining of resources and collections of the art museum and the Whangarei Museum into a central locality/arts precinct.