

Northland Art Guide

Te Aratohu a Toi o Te Tai Tokerau





Front Cover Credit

Artist:
Pamela Harden

Artwork Title:
CALL FOR ENTRIES: Artist To Go To Mars

Artist Website:
pamelairis-harden.pixels.com

Full Photo Scale



Kia ora and welcome to the 3rd Edition of the Northland Art Guide

All around Northland, galleries, artist studios and public artworks dot the landscape giving you a glimpse into our thriving cultural community. As Northlanders we are very proud of the independent, ground-breaking artists and artisans that thrive amongst our community.

Discover award winning potters, glass blowers, felt-craft, sculpture, Ngā Toi Māori (Māori art), breath-taking landscape art, portraiture, gorgeous woodworks and visit the studios of artists in residence.

For a surprisingly diverse and unique experience, take a trip with one of the Northland Journey Maps and use it alongside this Art Guide and the Northland Heritage Guide. Whether you're on foot, riding a bike, or driving, an arts adventure is sure to satisfy your aesthetic taste, and there is plenty to choose from as you tour around the region.

The region hosts many wonderful events, festivals, musical gigs and dramatic performances and yet in this current environment, some of this type of entertainment may not be readily available — don't let that daunt you, check out EventFinda, local iSites for more information and who knows you may make some new friends along the way.

An aspect of our local townships is how they are embracing murals, street art, and the upcycle world, with an increasing number of blank walls being transformed into works of art by local and international artists and the world of slow fashion changing our reaction to fast fashion — thoughtful, intentional and holistic. Take the time to meander through towns, seek out the second-hand shops and upcycled spaces — make a vote for sustainability.

Just remember, due to whatever the current Covid-19 pandemic alert levels may be, opening hours of galleries and artist studios across Te Tai Tokerau are affected. We recommend that you check gallery opening hours prior to visiting or ring ahead. Don't forget to wear your mask and use your track and trace app.

Use this Art Guide to experience spectacular coastlines, natural landscapes and connect with the land, its Māori culture, Ngā Toi Māori (Māori Art) and stories about our heritage and its people.

Nā reira, nau mai, haere mai ki Te Tai Tokerau.

Kia pai tōu toro - enjoy your visit!

Hinurewa te Hau
General Manager

**CREATIVE
NORTHLAND**



Artistic Inspiration and Bursts of Creativity...

Welcome all you creative adventurers

As you begin your creative journey we have a challenge for you to create a blog while you're in the North and provide us with an honest to goodness experience, with a focus on learning about the arts, culture, heritage, or unique character of a place you have visited. Our aim with this Art Guide is to provide a connection with those who reside in those places and who create this living culture. As you travel Northland you will find more people are creating easily shareable experiences than ever before and we would love to hear about them.

So we have written 3 short journey stories to get your travel diary started and here are some other creative and cultural resources to assist you.

Northland Journeys

The Twin Coast Discovery Highway is just the beginning of your trip. It'll lead you to our byways that take you even deeper into our amazing stories and closer to our small towns with big hearts, our unforgettable natural environment and timeless places we call home.

Each 50–150 kilometre journey will deliver an enjoyable half to full day of exploration. Plan your tour around Northland by downloading these free printable journey maps to find these hidden gems and use this guide to create your artistic itinerary.

There are several Northland Journey Maps you can download from www.northlandnz.com.

Northland Heritage Guide

The Northland Heritage Guide is another of our publications — it is your pathway to explore the special history, heritage and culture of this region. There are 28 museums in Te Tai Tokerau (Northland) region, each one of them sharing their stories of migration and settlement, showcasing collections of 'gum' collected from the Kauri forests to farm machinery or vintage vehicles. There is a wealth of historic heritage sites to visit, Māori culture to experience and interpretive centres such as Te Hononga Hundertwasser Memorial Park that are preserving our stories past, present and future.



Image credit: David Kirkland

Hātea Loop the BEST Hidden Gem in Whangārei

If you're researching "interesting things to do in Whangārei," then you need to take a walk around the Hātea Loop which is 4.2km in length and will take you 60 minutes to do the whole loop. The entire loop circles the Hātea River, it is a multi-use trail loop around the inner harbour including the Town Basin marina, two lifting bridges and a sculpture and heritage trail.

The beauty of the Hātea Loop (Huarahi o te Whai, or Pathway of Opportunity) is it has 10 wonderful artistic spaces to visit all accessed by crossing three award winning bridges; Te Matau ā Pohe inspired by the design of Māori fish hooks crafted of bone, Kotuitui Whitinga a footbridge designed in its most simple form as a link based around movement, journey, water, light, food gathering and cultivation. All establishing and reinforcing "a sense of place" and the Canopy Bridge a windbreak and rain canopy — a row of polycarbonate panels made of transparent material to ensure views of the upper Hātea River and the adjacent 1936 Victoria Bridge.

The other seven activities you will experience on the way — William Fraser Memorial Park on Pohe Island is approximately 54 hectares of recreational space, Clapham Clock Museum's 400 clocks and watches all on time, Town Basin playground designed to cater for a range of ages and abilities, Reyburn House an intimate gallery set in the oldest pioneer settlers house in Whangārei, Riverbank Theatre dedicated to performance and fantastic shows, Waka and Wave Millennium sculpture located at Hihiaua Point near Hihiaua Cultural Centre acknowledges the history of the site as a landing place for waka and later as a point of arrival for Pākehā seafarers.

The gem amongst them all is the **Camera Obscura 'Timatatanga Hou'** a sculptural steel shell-like structure into which people can walk, to discover an upside-down projection of Whangārei's celebrated Bascule bridge Te Matau ā Pohe and its surrounds, complete with vehicles, boats, people, scudding clouds and flowing water.

The attraction offers the creative adventure a simple yet wonderful phenomena of light projection, and you can adjust the image using a movable aperture on the wall of the camera obscura.

It is one of a handful of camera obscura sculptures in the world and is one of the largest.



Camera Obscura Whangārei / Timatatanga Hou (Image credit: Diane Stoppard)

The Far North's most Beautiful Places to Visit

The Far North townships of Waitangi and Russell are beautiful places to visit, full of hidden treasures for the creative adventurer to explore. Waitangi is a journey of discovery as a nation each year celebrates, the Te Tiriti o Waitangi signed on the 6th February 1840. I love the sounds and smells associated with this day, kai being prepared, laughter, chatter, waiata (song) and karakia (prayer) in readiness for 5am Dawn service in Te Whare Rūnanga (Carved Meeting House) and festival celebrations to follow.

The most beautiful place on earth (and I'm biased) is the Hokianga Harbour on the west coast. There is a tranquility about this environ, that is captivating for the intrepid traveller and their camera to discover one of the most incredible places and send you home with an unforgettable 'wow' moment that will stay with you forever. If you're a visual artist I hope you have brought your paint brushes.

My final beautiful place is Ahipara at the southernmost extremity of the matchless Ninety Mile Beach. Ahipara means '**sacred fire**', was bestowed by Te Rarawa whose ancestral waka, the 'Tinana', made landfall here. What enchants me the most about this place is the incredible sunsets, the unspoiled sandy beach and shellfish gathering which is quite an artform to learn the 'Tuatua Twist', which involves standing in the water at low tide and twisting your feet in the sand until you feel the telltale hard edges of tuatua. A good dance move to learn when gathering kaimoana (seafood)!

How to spend the perfect day in Kaipara

The Kaipara district is one of the most fabulous places to chill. The incredible ruggedness of the Kauri Coast offers some of the most awe-inspiring and venturous journey stories. There is so much to see and do from Kauri forests to clear turquoise waters, hiking trails, and plenty of craft and heritage.

If you visit Kaipara during the Matariki season (June–July) be sure to check out the Matariki festival taking place in Mangawhai at the Activity Zone. There will be lots to do and see while you are there.

If you are going to explore, then there is nothing like going down an old memory lane visiting a Museum or taking a 30 minute drive to Trounson Kauri Park to be among the young Kauri Trees to regenerate mind, body and soul. The creative mind can crave the crystal-clear Kai Iwi Lakes or the longest drivable beach (100km) Ripiro Beach, or the majestic Pouto Peninsula for inspiration. It is a place for writers, poets and film-makers to look at the world in a different way and feel the passion from the people and landscapes viewed, and use it in your own writing.

Image credit: Northland Inc

1 Mangawhai Artists Gallery



Located in the Village, Mangawhai Artists Gallery hosts exhibitions on a fortnightly cycle. Booked out for the year ahead, exhibition slots are keenly sought by member artists.

45 Moir Street, Mangawhai
Open most days 10am–3pm
ph: 022 394 1226

2 Pipi Gallery



A family run Mangawhai art gallery with a passion for appreciating art and connecting people to NZ made products. Shop NZ made gifts online or come and visit the gallery.

1/b Molesworth Drive, Mangawhai
Open Mon–Fri 10am–4pm,
Sat 9am–4pm, Sun 10am–3pm
ph: 09 431 4849

3 Sarah C Gallery and Gifts - Indoor and Outdoor Art



Sarah C offers a range of indoor and outdoor wall art and sculptures inspired by her coastal and bush environment.

18 Thelma Road South, Mangawhai
Open most days 10am–4pm
ph: 027 572 7242

4 Gallery28



Gallery28 is the studio and showroom for wood artist John Ecuyer. Over 30 years John's work has found its way into public collections both here and also Taiwan and the USA.

28 Matakoho East Road, RD1,
Matakoho
Open by appointment
ph: 021 182 6762

5 White Rock Gallery Incorporated



White Rock Gallery, a collective of Kaipara artists provides an eclectic mix of local art and craft displayed in a light and airy space in Ruawai township. Ideally situated on SH12 between Brynderwyn and Dargaville.

8 Freyberg Road, Ruawai
Open daily 10am–4pm
ph: 021 026 78241

6 The Woodturners Kauri Gallery



Visit the working studio and gallery of one of NZ's leading wood turners Rick Taylor who uses NZ ancient Kauri wood for most of his creations.

4 Murdoch Street, SH12, Dargaville
Open daily 9am–5.30pm
ph: 09 439 4975

7 Dargaville Gallery



Gallery of art by Rick and Sue Taylor plus other invited New Zealand artists.

4 Murdoch Street, SH12, Dargaville
Open daily 9am–5.30pm
ph: 09 439 4975

8 Muddy Waters Gallery



The gallery displays a wide range of artwork by the members including art and craft work from workshops and studios. The gallery space includes studios for monthly rental and workshop spaces for classes.

Municipal Building
43 Hokianga Road, Dargaville
Open Mon–Fri 11am–3pm,
Sat–Sun by appointment
ph: 027 525 8189

9 Kelly Street Gallery



Kelly Street Gallery has a huge variety of paintings and prints from Baylys Beach artist Sean Mc Donnell.

3 Kelly Street, Baylys Beach, Dargaville
Open by appointment
ph: 022 635 3312

10 Flax and Fibre - Gallery and Flax Floristry School



New Zealand's largest commercial flax flower producer. Every flower is individually hand made and hand dyed. New Zealand's only flax floristry school. Online and in person classes.

4494 State Highway 14, RD2, Tangowahine, Dargaville
Open Mon–Fri 9am–3.30pm
ph: 09 439 7875

11 Toi Box Hokianga



A 20ft container renovated into an artist based community gallery, situated at Opononi Carpark, Hokianga. A diverse selection of weaving, carving, painting, drawing, ceramics, installations, jewellery and more.

Opononi Carpark, Hokianga Harbour Drive, Opononi
Open daily 10am–3pm from mid October 2021 to Easter 2022
ph: 021 0236 6424

12 The Old Rawene Campus



This exciting arts precinct houses computer suites, a community recording studio and many different learning spaces. A range of Arts, IT, Environmental Science and Trades Training courses are in different stages of inception. A gallery featuring work made onsite is envisioned.

Nimmo Street, Rawene, Hokianga
Open Mon–Sat hours vary
ph: 021 0286 3712

13 OH! STUDIO



OH! STUDIO encompasses Art, Fashion & Design, repurposing and upcycling. Expect to see one off pieces made locally, ornamental & fruiting plants and artisan tie-dye utilising natural dyes.

The Wedge Building, 2B Parnell Street, Rawene
Open Summer daily 10.30am–4pm, Winter Sat 10.30am–4pm, Spring/Autumn Sat–Sun 10.30am–4pm
ph: 021 071 3054

14 No 1 Parnell



No 1 Parnell is a retail gallery featuring regional artists' work, a feature exhibition space, second hand bookshop and cafe.

1 Parnell Street, Rawene, Hokianga
Open Sun–Sat 8am–4pm
ph: 09 405 7520



Mural painted by Brigita Bell and Kelsey Hansen, 2014. Location: Dargaville Museum

15 Liz McAuliffe Artist



In their painting/sculpture practice Liz is attracted to and intrigued by Nature and works with the minutiae found there. Creating from and with nature has long been a way for Liz to stay connected to their self and their environment. You will find work on www.lizmcauliffe.com and in many galleries.

156 West Coast Road, Kohukohu
Open by appointment
ph: 021 139 9607

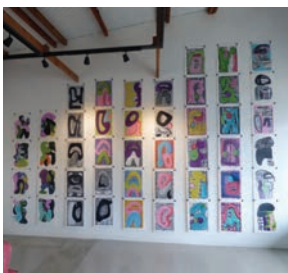
16 Village Arts Gallery



Village Arts Gallery is a contemporary gallery on the northern side of the historic Hokianga Harbour. For 15 years exhibiting and supporting the work of established and emerging Northland artists and crafts-people through its community focus.

1376 Kohukohu Road, Kohukohu
Open daily 10am–4pm Summer,
10am–3pm Winter (phone ahead)
ph: 09 405 5827

17 Jane Molloy-Wolt Art Studio



The studio is open by appointment and located in the historic village of Kohukohu. You will also find Jane's work at the Village Arts Gallery. A wonderful gallery with an amazing view across the Hokianga Harbour. The light openness of this contemporary gallery offers beautifully curated exhibitions.

1376 Kohukohu Road, Kohukohu
Open by appointment
ph: 09 405 5827

18 Garden Sculpture NZ



Handcrafted original NZ nature and Pacifica garden sculptures made with concrete composite material for over 20 years. The workshop and display are up the end of a river valley, inland from Doubtless Bay.

Honeymoon Valley, Peria, inland
from Taipa, Doubtless Bay
Open by appointment
ph: 09 408 5588

19 Fern Flat Pottery



Making lively elemental pottery that people can enjoy for its lasting beauty. All while expressing the ancient and timeless quality of clay. The artists have been working and living in Fern Flat for 45 years. You are welcome to visit their showroom and workshop.

72 Te Karoa Road, Fern Flat, Peria,
RD2, Kaitiaki
Open daily 9am–6pm
ph: 09 408 5548

20 Agnes H Handweaving



Pushing the ancient art and craft of weaving into the 21st century using natural fibres like cotton, linen, wool but mostly silk, the finer the better for luxuriously draping scarves and shawls.

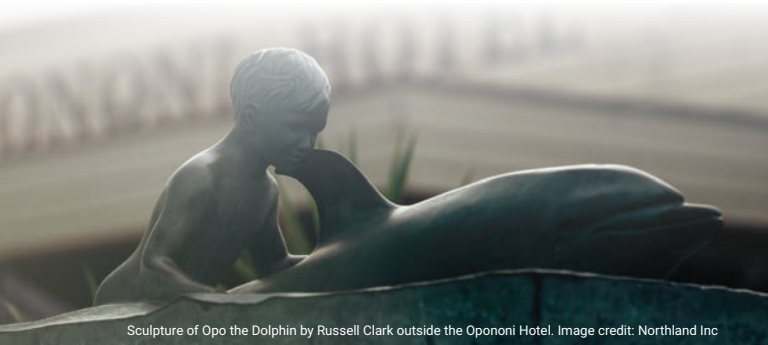
827 Oruru Road, Peria, RD2, Kaitiaki
Open daily 9am–5pm
ph: 09 408 5893

21 Te Whare Whiri Toi



Te Whare Whiri Toi is a Māori Art Gallery based at Roma Marae in Ahipara. Promoting the use of local resources, Māori artists and kōrero tuku iho through community exhibitions and teaching in local schools.

134 Roma Road, Ahipara (entrance
to gallery on Waitehūia Road)
Open during Summer
ph: 09 409 4846



Sculpture of Opo the Dolphin by Russell Clark outside the Opononi Hotel. Image credit: Northland Inc

22 SMWatson.online



Contemporary art and modern landscapes. View online or visit the artist's studio by appointment.

38 Turk Valley Road, Waiharara (via Kaitaia)
Open by appointment
ph: 09 406 8866

23 The Neeson Gallery



Small home gallery featuring art by Jan Neeson (acrylic, oil and mixed media) and artistic woodturning by Hubert Neeson. If planning a visit, best to call on 0273548412. Otherwise please visit if you see the flag displayed.

29 Lori Lane, Coopers Beach
Open daily 10am–4pm (except Saturdays when the Mangonui Arts and Crafts Market is on)
ph: 09 406 0227

24 Flaxbush Shop



An excellent selection of NZ made and imported gifts, homewares, clothing, jewellery and seashells. Local made flax ketes, weaving, greenstone and bone jewellery, plus sculptures and art by local artisans.

50 Waterfront Drive, Mangonui
Open Mon–Fri 10am–5pm,
Sat–Sun 10am–3pm
ph: 09 406 1510

25 Mark Daniells Art



Fine Art originals and prints of artist Mark Daniells.

126 Waterfront Drive, Mangonui
Open daily 10am–5pm Summer,
most days 10am–4pm Winter
ph: 021 078 7358

26 The Wharf Store



Located in the quaint little village of Mangonui, The Wharf Store has a wide range of art, jewellery and gifts. NZ made and imported.

126 Waterfront Drive, Mangonui
Open daily 10am–5pm Summer,
most days 10am–4pm Winter
ph: 09 406 0009

27 Exhibit A Mangonui Gallery



Showcasing brilliant talent and celebrating a collective of Northland artists exhibiting contemporary fine arts and quality handmade crafts. The gallery located in the historical Mangonui Courthouse in the heart of Mangonui, on the waterfront. See more at mangonuigallery.co.nz

124 Waterfront Drive, Mangonui
Open daily except Christmas day
10am–4.30pm
ph: 09 406 2333

28 Rachel Barber Artist



A quirky little boathouse and art shed is where Rachel spends most days creating. Rachel's passion is to paint large scale feminine portraits, with a playful energetic abstraction. Come and visit the 'Blue lady' and feel the vibrancy merge into your day.

195 Turvey Road, Mangonui
Open by appointment
ph: 021 022 79491

29 Felicity Fahy Studio



Bold, engaging abstract art reflecting a visceral connection with the beauty that surrounds us and the unruliness of the universe.
www.felicityfahy.com

Cable Bay, Mangonui
Open by appointment
(available most days)
ph: 021 866 040

30 Bohemian Picnic Art Gallery and Store



Welcome to the gallery-studio and quirky gift store of NZ Artist Sandra-Jane Suleski nestled amongst her idyllic home surrounds in Whangaroa.

44 Wainui Road, Kaeo
Open Nov–Feb Tue–Sat 11am–4pm, Mar–Jun Thu–Sat 11am–4pm, Jul–Oct Sat 11am–4pm
Other times by appointment
ph: 09 405 0156

31 Te Pu O Te Wheke Arts Gallery



With the magical octopus in the window, this vibrant art gallery is situated in the main street of Kaikohekohe. The gallery exhibits local talent (both arts and crafts), holds exhibitions and hosts workshops.

118 Broadway, Kaikohe
Open Tue–Fri 10am–3pm
Closed public holidays
ph: 022 409 9645

32 Passion8



Sited in the 1929 Kaikohe Dairy Co-op building, an extensive mix of locally made art and craft sits alongside eclectic collectibles.

9 Thorpe Road, Kaikohe
Open Mon, Wed, Fri 10am–4pm, Sat 10am–2pm
ph: 09 405 2235

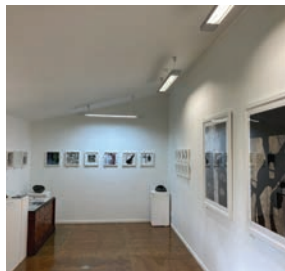
33 Lakehouse Studio



Lakehouse Studio is a working studio gallery space and sculpture in the garden.

59 Stanners Road, RD2, Kerikeri
Open by appointment
ph: 09 407 3383

34 Art at Wharepuke



Gallery specialises in fine art printmaking and work in other media. Printmaking by Mark Graver RE and ceramics by Richard Parker alongside changing shows. Non toxic printmaking studio offering workshops set within a subtropical garden with 1km sculpture trail and restaurant.

190 Kerikeri Road, Kerikeri
Open daily 10am–5pm
ph: 021 139 0894

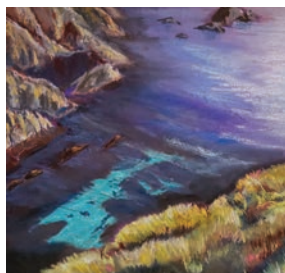
35 Art@Rangitane



Affordable New Zealand Contemporary Art, only 12 minutes from Kerikeri, overlooking the sea in the Bay of Islands. Created by award-winning abstract artist Cassandra Gaisford. As seen in NZ House and Garden. Commissions Welcome.

174 Rangitane Road, Rangitane
Opening hours vary
ph: 021 873 833

36 James Dean



Vivid portraits, beautiful land and sea scapes. Commissions welcome.

21 Taronui Road, Kerikeri
Open by appointment
ph: 021 171 1141


37 Little Black Gallery



Featuring a modern and fresh art and design space. Little Black gallery focuses on local and national artists and designers and offers original art, jewellery, prints, sculpture, woodcraft, art blocks, ceramics and gifts.

394B Kerikeri Road, Kerikeri
Open Tue–Sat 10am–4pm
ph: 09 407 1311

-  Far North
-  Bay of Islands
-  Hokianga
-  Whangārei
-  Kaipara

 Bay of Islands

 Hokianga

● Whangārei

 Kaipara

Airports 



38 Uku Toi Studio and Gallery



Uku Toi Gallery is owned and operated by Rhonda Halliday who is a member of Ngā Kaihanga Uku, a Māori clay collective, and also Te Taitokerau Māori Arts Collective. Her studio/gallery sells her work and promotes the work of other artists from these collectives.

33a Tyree Road, Kerikeri
Open by appointment
ph: 027 458 8514

39 The Art Glass Studio



Exquisite Art Glass and Jewellery created by Glass Artists, Penny and Darrell Ryan, they have a stunning display in their gallery for you to view and purchase.

32 Blue Gum Lane, Kerikeri
Open Mon–Fri 10am–3pm
(other times by appointment)
ph: 021 677 199

40 Journey Woodturning



An intimate space with a collection of fine wood art, paintings, sculptures, jewelry and wood turned items. Guy du Toit is a wood artist who trained in France and is onsite at his studio and fine art gallery in Kerikeri exhibiting work from local artists.

68 Wiroa Road, Kerikeri
Open Sat & Sun & selected public holidays 9am–4pm
ph: 027 403 9641

41 Mark Mitchell Ceramics Gallery



Local ceramic artist Mark Mitchell produces hand thrown domestic ware for use in the kitchen, ceramic vessels and outdoor ceramic sculpture.

6 Retreat Road, Haruru
Open Tue–Sun 10am–4pm
ph: 022 038 2112

42 Jo May Design



New Zealand Art & Gifts, & Kiwiana Outdoor Garden Art.

Shop 5, Selwyn Mall, Paihia
(behind the main shops)
Open daily 10am–4pm (except on Tuesdays shop is closed)
ph: 027 450 7377

43 South Sea Art



Nestled in the main street of Russell, South Sea Art exhibits an eclectic array of original & print artwork, sculpture, woodwork & jewellery from local Northland artists.

15 York Street, Russell
Open daily 10am–5pm, closed Tuesdays during Winter
ph: 09 403 7268

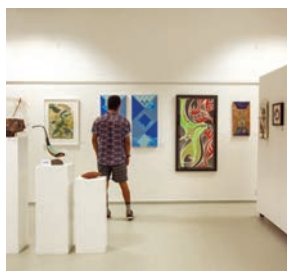
44 The Cottage Studio



Artist working studio located in the beautiful town of Russell.

The Cottage, 6169a Russell Whakapara Road, Russell
Open by appointment
ph: 021 361 952

45 Kings Theatre Creative



The largest gallery in the Bay of Islands, offers a unique, authentic art experience; group and solo exhibitions, Toi Māori artworks and gifts from 200+ local artists.

80 Gillies Street, Kawakawa
Open by appointment or refer to www.facebook.com/kingstheatrecreative for gallery opening hours.
ph: 021 024 57571

46 Gallery & Café Helena Bay Hill



The Gallery has a wide-ranging collection of art by established and emerging New Zealand artists, many of which are Northland based. This includes contemporary Māori and Pacific artists. There is a great selection of paintings, wood art, handmade furniture and more.

1392 Old Russell Road,
RD4, Hikurangi
Open daily 10am–5pm
ph: 09 433 9616

47 Jessie Rose Boutique/Studio



The Jessie Rose boutique consists of original art work, prints, clothing, jewellery, merchandise and so much more. The Inspire art studio is where every week over 100 students attend 'Inspire' art with Jessie Rose.

573/575 Kamo Road, Kamo,
Whangārei
Open Tue–Fri 11am–6pm, Sat
11am–2pm
ph: 021 155 6803

48 Natural Creations



Mike Cameron is an emerging artist working in mixed media and with a passion for sculpture and carving. Mike combines research with his own whakaaro (insights/concepts) to develop unique body of works. He has existing works to view and is available for commission pieces.

30 Bedlington Street, Whau Valley,
Whangārei
Open most days 9am–5pm
ph: 09 437 3730

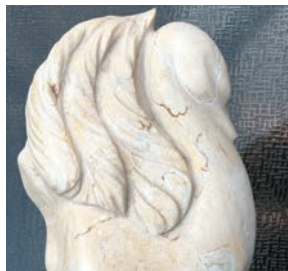
49 Northland Pottery



Bright colourful pottery for indoors or outdoors.

26 Erin Street, Tikipunga, Whangārei
Open by appointment
ph: 027 452 5128

50 ARTINFORMS



Tracey Willms Deane, founder of ARTINFORMS, is a full time sculptor, painter, printmaker, and drummer. She facilitates nature circles, drumming circles, and offers classes in sculpture, drawing, and drum making. For info on exhibitions, sales, and classes email artinforms@xtra.co.nz

PO Box 7047, Tikipunga, Whangārei
Open by appointment
ph: 027 271 5010

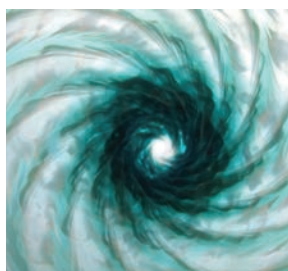
51 Glenbervie Pottery



Just ten minutes from Whangārei town centre and situated amid an area of garden and native bush, the gallery displays the work of Jin Ling and Greg Barron alongside their studio and workshop.

294 Ngunguru Road, RD3,
Whangārei
Open daily 9am–5pm
ph: 09 437 5359

52 Tutukaka Gallery



Visit Tutukaka Gallery for beautiful local art and affordable gifts including paintings, prints, jewellery, art glass and weaving.

11 Marina Road, Tutukaka
Open daily 10am–5pm Summer,
Fri, Sat, Sun 10am–5pm Winter
ph: 027 451 9600

53 Zandy Snell | Photographer



Award winning Fine Art and Creative Portrait Photographer based in Patau South.

60a Beasley Road, Patau South,
Whangārei
Open by appointment
ph: 027 584 1991

54 Birdsong Studio and Gallery



Featuring a range of media including mixed textiles, acrylics, textiles, craft and up cycling works.

136 Ocean Beach Road, Whangārei Heads
Open by appointment
ph: 027 527 9617

Whangārei Heads Arts Trail



The Whangārei Heads Arts Trail (WHAT) will take place over Easter 2022 Saturday 16th and Sunday 17th April.

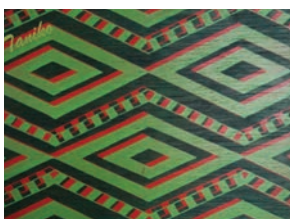
It's a great opportunity for art lovers and explorers. Up to 50 artists around the Whangārei Heads area open up their studios or exhibit in community venues.

Visitors can explore side roads, waterfront, bush and beach enclaves to find the talent living there. Painters, potters, jewellers, printmakers, photographers, bead workers, weavers and sculptors are dotted throughout the area and this is your chance to visit them at their workplace.

Over 30 accommodation providers on the Whangārei Heads Peninsula, local cafes, tavern and specialty sites cater for the Arts Trail visitors. Make sure you put the event in your diary and book your accommodation early!



Kahakaha at high tide Cindy W



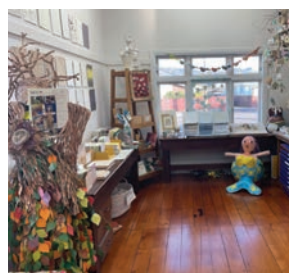
55 Leslie Cleary



Featuring some of Northland's iconic beaches, Leslie has a range of her oil paintings & prints in the gallery. Home most days - call to arrange a viewing.

18a Church Street, Onerahi, Whangārei
Open by appointment
ph: 021 0261 3265

56 The Papermill



The Papermill is a vibrant creative space for artists with intellectual disabilities to create handmade paper and paper art from natural fibres and recycled paper. The Papermill is unique in NZ and has been operating for over 30 years. Paper and art for sale.

38 Kamo Road, Kensington
Open Mon-Fri 9am-3pm
ph: 09 459 1459

57 Hangar Gallery



Hangar Art and Framing owners Megan and Barry Squire are proud to promote and support local artists. Exhibitions in the gallery space change regularly, and the variety of artwork on show includes prints, paintings, sculpture, ceramics, glass and jewellery.

14 Cross Street, Regent, Whangārei
Open Mon-Thu 9am-5pm, Fri 9am-4pm, Sat 9am-12pm
ph: 09 438 1260

58 Quarry Arts Centre



The Quarry Arts Centre is home to a variety of arts activity with regular exhibitions in the Yvonne Rust Gallery, workshops, studio spaces, kilns and ceramics supplies, café and shops.

21 Selwyn Ave, Whangārei
Open Mon-Sat 9.30am-4.30pm
ph: 09 438 1215

59 Quarry Craft Shop & Gallery



Boutique artists' cooperative - small but a welcome surprise to visitors! Locally produced art by over 30 artists. A must see in Whangārei, just off State Highway 1.

21 Selwyn Ave, Whangārei
Open daily 9.30am–4pm
ph: 09 438 9884

60 M Francis Fine Art



Features the work of international artist M Francis McCarthy. Original oil paintings with a traditional twist. Many small, affordable paintings available as well as larger works.

21 Selwyn Ave, Whangārei
Open Mon–Sat 1pm–5pm
ph: 027 848 3498

61 Joan Emery Art | The Blue Door Gallery/Studio



Joan Emery works in many mediums, genres, and approaches from classical chiaroscuro paintings in oil to abstract paintings using contemporary materials. Joan's constant aim is to create a beautiful painting.

21 Selwyn Ave, Whangārei
Open Mon–Sat 10am–3pm, Sun 11.30am–3pm or by appointment
ph: 022 413 4071

62 Art by Lynda Bell



Lynda paints bountiful animal paintings set in worlds where all things imagined are possible; dreams are real and life is abundantly joyful. These painted stories unfold into utopian worlds of colour and fun, where animals are loved and kindness is everywhere.

21 Selwyn Ave, Whangārei
Open by appointment
ph: 021 713 277

Street Prints Manaia

In January 2019, some of the world's best street artists took part in the Street Prints Manaia, International Art Festival in Whangārei. 15 large scale art murals based on the theme of "Tuia te muka Tāngata" "Weaving the threads of humanity" were completed and Whangārei and Aotearoa has been gifted with these incredible works of art.



Map Key

- | | |
|--------------------------------|--|
| 1. Amanda Valdes | Behind Bayleys Real Estate, Hannah St |
| 2. Askew One | Beside Far North Crossfit, 17 Finlayson St |
| 3. Bryce Williams | Northable Equipment Plus, 73 John St |
| 4. Charles and Janine Williams | Bank St Barber, 168 Bank St |
| 5. Dourone | Butter Factory Lane, Behind ASB Bank |
| 6. Earnest Bradley | Anytime Fitness, Walton St |
| 7. Fin Dac | Back of Police Station, Hannah St |
| 8. Gina Kiel | Back of City Carpark, James St |
| 9. Lisa King | Headlines, Walton St |
| 10. Mateus Bailon | Butter Factory Lane, Behind the Quest |
| 11. Melinda Butt | Bank St Park Gallery, Bank St |
| 12. Millo | Behind Police Station, Lower Cameron Rd |
| 13. Mike Tupaea | The Hub, 91 Dent St |
| 14. Paola Delfin | Next to NZME, 88 Robert St |
| 15. Swiftmantis | Behind Event Cinemas, John St |

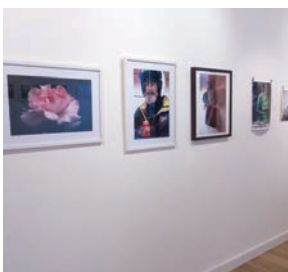
63 Te Kowhai Print Trust



Te Kowhai Print trust is an open access working art studio that specialises in print making techniques, with a collection of heritage printing equipment and available for booking for classes, short courses, and activity days. No experience necessary.

21 Selwyn Ave, Whangārei
Open Tue, Wed, Thu 10am–3pm
ph: 027 310 4712

64 The Shutter Room



The Shutter Room is a gallery and studio space for Northland photographers. Exhibitions change out monthly at the beginning of the month.

Old Library Building
7 Rust Ave, Whangārei
Open Wed, Thu, Fri 10.30am–2.30pm, Sat 10am–1pm
ph: 021 462 031

65 Megan Dickinson Gallery



Established in 2017, MD Gallery exhibits high quality, contemporary fine art by established and emerging Northland artists. On a monthly rotation, an inspiring new exhibition is shown in the main gallery.

12 Rust Ave, Whangārei
Open Tue, Wed, Thu, Fri 10am–4pm,
Sat 10am–2pm
ph: 027 338 1578

66 The Quest Art Space



Papermill exhibition 'Vibrant Journeys'

A collaborative and unique gallery space provided by Quest Whangārei and managed by Creative Northland. Experience regular exhibitions from local emerging and mid tier artists.

58 Bank Street, Whangārei
Open daily 9am–4pm
ph: 09 430 0710

67 Journey



Journey is a fresh & innovative art, fashion & design studio located in the heart of Whangārei. This is a working Studio/Retail Space/Gallery giving customers a unique shopping experience. Everything at Journey is made by owners/designers Mike & Ruth.

19b Bank Street, Whangārei
Open Tue–Fri 9:30am–4:30pm,
Sat 8.30am–2pm
ph: 027 224 3859

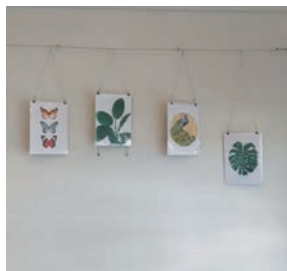
68 UPcycled af



NZ's first gallery that deals exclusively in UPcycled art. 'UPcycled af' completely turns over on the first Friday of every month, celebrated alongside new and existing artists by way of an opening at 5.30 pm. All welcome.

1 Woods Road, Whangārei
Open Wed, Thu, Fri 9.30am–5.30pm, Sat 9.30am–3.30pm
ph: 027 355 4014

69 Mind Body and Salt



Mind Body and Salt supports the Toro Mai Trust which gives a scholarship to year 13 students who will study Art at University. The scholarship winner exhibits and sells their artwork from Mind Body and Salt's Wellness Centre.

49 Walton Street, Whangārei
Open Mon, Wed 9am–6.30pm, Tue, Thu, Fri 9am–5pm, Sat 9am–1pm
ph: 09 972 7121

70 Alan Squires Photography



Whangārei & Northland fine art landscape photography, with a particular focus on our glorious coast. Large scale Black & White and colour digital photography displayed on a variety of media.

Studio 5/1 Rathbone Street, Whangārei
Open most days, best to phone or message ahead.
ph: 021 889 528

Hundertwasser Art Centre with Wairau Māori Art Gallery



Hundertwasser Art Centre with Wairau Māori Art Gallery is an original Hundertwasser architecture project. Absolute rationalism, geometric straight lines and the uniformity of modern architecture is abandoned in favour of new values like uniqueness, romanticism, individuality, creativity, especially creativity in harmony with nature. Hundertwasser created houses in which the creativity of nature meets human creativity. In keeping with his philosophy, the Hundertwasser Art Centre restores territories to nature with spontaneous vegetation, tree tenants and an afforested roof.

The launch of the Hundertwasser Art Centre realises a shared dream that has transformed the lives of everyone who participated in its creation. The visionary architectural project was made possible through the commitment of a determined community over many years of fundraising and it is supported by the Hundertwasser Non-Profit Foundation in Vienna.



Te Huarewa Toi Wairau Māori,
81 Dent Street, Whangārei 0110
Aotearoa New Zealand
wairaumāoriartgallery.co.nz

Ko te huarewa toi Wairau Māori te tuatahi o ngā tohanga huarewa toi Māori ki Aotearoa.

Ka hono tahi ia ki tētahi roopū kōwhiriwhiri o ngā huarewa toi iwi taketake ā-papori ā-tai ao, ā, ka nohoia ki roto i te huarewa toi Hundertwasser ātamai nō nā tata nei ki roto i te mana toi hou a Hātea ki Whangārei.

Ko te ingoa "Wairau" ko te whakamāori mō "Te Wai Kotahi Rau", kia ōrite ki te tikanga o Hundertwasser kia "Te Wai Kotahi Rau" ki roto i te reo Tiamani. Ki Te Ao Māori ko te ariā o te wai whakarea he mea whai tikanga hohonu inā ko te wai te paparahi mō ngā mea ora katoa.

Ka whakanui me te whakatairanga a te huarewa toi Wairau Māori i te tino toi Māori ōnaiane i Aotearoa nei me ōna tikanga tuku iho.

The Wairau Māori Art Gallery is the first dedicated public Māori art gallery in Aotearoa.

It joins a select group of public indigenous art galleries internationally and will be housed within the stunning new Hundertwasser Art Centre situated in the new Hātea Arts precinct in Whangārei.

The name 'Wairau' is Te Reo Māori for One Hundred Waters, just as Hundertwasser means One Hundred Waters in the German language. In Te Ao Māori the notion of multiple waters has deep symbolic meaning since water is the basis of all living things.

Wairau Māori Art Gallery will celebrate and showcase the best of contemporary Māori art and customary practice in Aotearoa.

71 Art On Riverside Whangārei



Art Gallery, studio space hire, and artists accommodation for small workshops above Hatea River, central Whangārei. 43 Riverside Drive is next driveway, after bend, 50 metres past Punga Grove.

43 Riverside Drive, Riverside,
Whangārei
Open daily 11 am–6 pm
ph: 09 438 8815

72 Jackie Stoddard



Jackie Stoddard is an artist, a photographer and a fashion designer; creative garments designer and has had entries in the World of Wearable Art.

43 Riverside Drive, Riverside,
Whangārei
Open daily 11 am–6 pm
ph: 09 438 8815

73 Hundertwasser Art Centre



Experience art and nature in perfect harmony in a unique architectural project dedicated to Friedensreich Hundertwasser. Presenting Hundertwasser's artistic legacy from his time in New Zealand, visitors will discover a gallery, a theatre, activity centre, museum store, and a café-restaurant.

81 Dent Street, Whangārei
Open Mon–Sun from 20 Feb 2022
ph: 09 430 4240

74 Wairau Māori Art Gallery



Artwork: Reuben Paterson

Located within the Hundertwasser Art Centre, Wairau Māori Art Gallery is home to the finest examples of contemporary Māori art and is designed to promote and enhance Te Ao Māori. It is the first unique and dedicated public Māori Art Gallery in Aotearoa New Zealand.

81 Dent Street, Whangārei
Open Mon–Sun from 20 Feb 2022
ph: 09 430 4240

75 THE BACH



100% Northland made, unique, quality original art and craft fill this spacious gallery shop. Ceramics, glassware, wood, jewellery, pounamu, prints, hats, cards, giftware, kete, woven, knitted and felt wearables.

Town Basin, Whangārei
Open daily 9.30am–4pm
ph: 09 438 2787

76 Burning Issues Gallery



Specialising in contemporary New Zealand handmade glass, ceramics, sculpture, paintings and jewellery. The high standard of work in the gallery is well recognised locally and internationally.

8 Quayside, Town Basin, Whangārei
Open daily 10am–5pm Summer,
Mon–Fri 10am–5pm, Weekends
10am–4pm Winter
ph: 09 438 3108

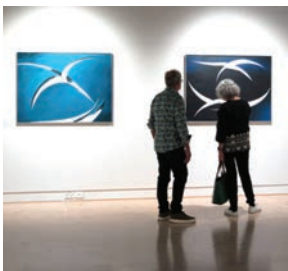
77 Steve Haywood Master Jeweller



Made with hand, head and heart. A selection of New Zealand made jewellery, representing Northland and New Zealand artists. Working jewellery studio, commissions are a speciality.

10 Quayside Way, Town Basin,
Whangārei
Open Mon–Fri 9.30am–5pm,
Weekends and Public Holidays
10am–3pm
ph: 09 438 2161

78 Whangārei Art Museum



Whangārei Art Museum holds touring and internally curated exhibitions, and showcases Northland, New Zealand and international artistic excellence in creative art practice. The museum's own collection contains heritage and contemporary artworks, and significant bequest collections.

91 Dent Street, Whangārei
Open daily 10am–4pm
ph: 09 430 4240

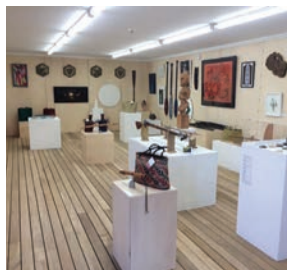
79 Reyburn House Art Gallery & Shop



Northland's community art gallery, located right on the waterfront at the Town Basin. Exhibiting all forms of visual artworks from both emerging and established artists in the oldest settlers house in Whangārei.

Reyburn House Lane, Town Basin,
Whangārei
Open Tue–Fri 10am–4pm, Sat &
Sun 10am–2pm
ph: 09 438 3074

80 Hihiaua Cultural Centre



The Hihiaua Cultural Centre is a vibrant centre of Māori and cross-cultural excellence. The project fulfils aspirations of the past, to revive our Māori culture with integrity and authenticity by showcasing excellence in Māori arts, education and technology.

56-58 Herekino Street, Whangārei
Open Mon–Thu 10am–4pm, Fri
10am–3pm, Sat 10am–2pm
ph: 021 0246 6954

81 Geoff Wilson Gallery



An educational gallery with purpose built exhibition spaces showing contemporary art from Te Tai Tokerau/Northland, Aotearoa/NZ and students studying art at NorthTec.

NorthTec, Gate 3, Raumanga Valley
Road, Whangārei
Open by appointment
ph: 09 470 3805

82 Judy Woods Art



Judy works in a studio at home in rural Maungatapere. A multi award winning artist she works intuitively creating abstract mixed media work.

61 Snooks Road, RD9,
Maungatapere
Open by appointment
ph: 021 256 5717

83 Gutry Art



The gallery houses the work of 12 local artists. Pottery, woodwork, glass jewellery, ceramics, mosaics, reverse paintings on glass, and a selection of other painting mediums and styles.

2A Shearwater Street, One Tree Point
Open most weekends during Summer months or by appointment
ph: 09 553 3771

84 The Art Cottage Bream Bay Creative Art Group



The Art Cottage is a great place for anyone who loves art, or is an artist or just wants to have a go. Pop in, have a cuppa and discuss how the group can meet your creative needs. 1 to 2 free sessions available to see if it is what you are looking for.

35 Lakeside Park Road, Ruakākā
Opening hours vary
ph: 027 322 6385

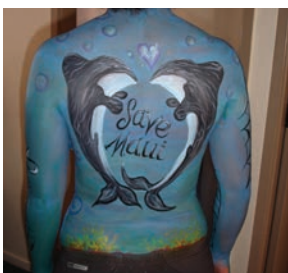
85 Face Painting Northland



Face and body painting artists available for events, parties and promotions across Northland.

Waipū
Available by appointment
ph: 029 776 7754

86 Silver Seas Studio



Coastal countryside home studio. Private gallery. Artworks and commissions available.

Waipū
Open by appointment
ph: 029 776 7754

Te Ahu Centre

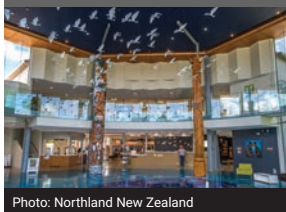


Photo: Northland New Zealand

Cnr of SH1 & Mathews Ave, Kaitaia
www.kaitaia.co.nz

Turner Centre



43 Cobham Road, Kerikeri
www.turnercentre.co.nz

Octagon Theatre



13 Aubrey Street, Whangārei
www.octagontheatre.nz

Whangārei Quarry Gardens



37A Russell Road, Kensington
www.whangareigardens.org.nz

ONEONESIX



116 Bank Street, Whangārei
www.oneonesix.nz

Whangārei Theatre Company



71 Reyburn House Ln, Whangārei
www.whangareitheatrecompany.org.nz

Forum North



7 Rust Avenue, Whangārei
www.venuesandeventswangarei.co.nz

Semenoff Stadium



51 Okara Drive, Whangārei
www.venuesandeventswangarei.co.nz

Northland Art Guide
In partnership with



PO BOX 959, WHANGAREI | 09 430 0710
www.creativenorthland.com
www.facebook.com/CreativeNorthlandNZ

This is a Creative Northland e-publication