

# Northland Art Guide

Te Aratohu a Toi o Te Tai Tokerau





**Front Cover Credit**

Artist: Yvonne Clapperton  
Artwork Title: Urititi Sand  
Medium: Oil on Canvas



### **Kia ora and welcome to the 4th edition of the Northland Art Guide**

Northland is a vibrant tapestry of artistic expression, where art galleries, artist studios, community spaces and public artworks are interwoven into the landscape, showcasing a thriving and nurturing multi-cultural community. The region takes pride in its independent, groundbreaking and leading-edge artists and artisans who push creative boundaries in a variety of mediums across the creative sector.

Explore a diverse range of artistry, from award-winning potters and glass-blowers to skilled crafters, sculptors, and masters of Ngā Toi Māori (Māori art). The region also features stunning landscape art, portraiture, and intricate woodworking. Don't miss the chance to visit artists-in-residence studios for an up-close look at their creative processes.

For a unique experience, embark on a journey with one of the Northland Journey Maps. Whether walking, biking, or driving, you'll find an arts adventure tailored to every taste. The Art and Heritage Guide compliments your exploration, offering insights into spectacular coastlines, natural landscapes, and deep connections with Māori culture and heritage.

Northland's townships are adorned with exquisite murals and innovative street art by local and international artists - you will even discover transmission power-boxes, which have been transformed into art pieces that further enhance and showcase the region's commitment and value of creative expression. In addition, you can also experience the holistic world of sustainable arts in many inspirational upcycled fashion practices and spaces.

Don't forget to check out and support local events, festivals, musical gigs, and performance-scenes via The Community a platform to connect through small, local, weekly events.

**Nā reira, nau mai, haere mai ki Te Tai Tokerau.**

**Kia pai tōu toro - enjoy your visit!**

**Olivia Garelja**

**Director**



## Artistic Inspiration and Bursts of Creativity...

Welcome, creative adventurers! As you embark on your journey through Northland, we invite you to capture your experiences and share them on social media. Focus on the region's rich tapestry of arts, culture, and heritage as you document your discoveries. Don't forget to tag us using **#CreativeNorthland**

Northland is a canvas of artistic inspiration, brimming with creativity. From the diverse talents of local artists to the vibrant communities that bring the region to life, Northland showcases a thriving creative scene.

As you explore, the Twin Coast Discovery Highway serves as your gateway to deeper cultural experiences. This scenic route will lead you to charming towns and hidden byways, allowing you to immerse yourself in our unforgettable landscapes and the timeless places we call home. Each journey, spanning 50 to 150 kilometers, promises a captivating half to full day of exploration.

Enhance your artistic adventure by downloading the free printable Northland Journey Maps from [www.northlandnz.com](http://www.northlandnz.com). These maps will guide you to hidden gems and help you craft an itinerary filled with artistic experiences. Use this resource to dive into Northland's dynamic art scene, from vibrant murals to innovative street art and sustainable arts.

The multifaceted creative landscape of Northland awaits you. We can't wait to hear about your artistic explorations and the unique stories you uncover.

Share your journey with us by tagging us on social media using **#CreativeNorthland**



## A Haven for Exploration and Inspiration

From the majestic Kauri Coast in the west, celebrated for its towering kauri trees, stunning beaches, and rich pioneering history, to Mangawhai on the east coast, renowned for its exhilarating surf breaks, historic tavern, and breathtaking vistas, the Kaipara region is a treasure trove of adventures and artistic inspiration.

Immerse yourself in the local creative scene by visiting vibrant galleries, attending music festivals, exploring art trails, and participating in cultural events throughout the year. Let the enchanting landscapes of forests, rivers, and oceans spark your own artistic journey.

Delve into Kaipara's rich heritage at Te Whare Taonga o Tunatahi in Dargaville, The Kauri Museum in Matakoho, and Mangawhai Museum. Discover local grassroots art and creativity at lively markets such as the Paparoa Artisan Market, twilight markets in Maungaturoto and Dargaville, Te Kōpuru Market, and Mangawhai's Saturday morning markets.

Experience the region's artistic flair at stunning galleries like Tika Pono Toi Gallery and Studio in Dargaville and Mangawhai Artists Gallery. Find inspiration in the natural beauty of Kai Iwi Lakes, Ripiro Beach, Pouto Peninsula, Trounson Kauri Park, and Mangawhai Heads Beach. Each location offers a unique canvas for creativity and exploration.

The Kaipara region invites you to explore, create, and be inspired by its diverse and captivating landscapes.

1

### Jocelyn Friis Art



An award winning artist exploring the tension between nature's resilience and vulnerability, and our connection to it. Inspired by time spent in nature.

74c Jude Road, Mangawhai  
Open by appointment  
Ph: 021 029 00166  
[www.jocelynfriisart.com](http://www.jocelynfriisart.com)

## 2 Mangawhai Artists Incorporated



We are a volunteer, community art gallery and workspace supporting over 180 talented local artists, hosting a new exhibition every fortnight and providing workshops and classes throughout the year.

45 Moir Street, Mangawhai  
Open daily 10:30am–3:30pm  
Ph: 022 394 1226  
[www.mangawhaiartists.org](http://www.mangawhaiartists.org)

## 3 Sarah C - Indoor Outdoor Art and Gifts



Sarah C offers a range of indoor and outdoor artworks using a range of mediums inspired by her coastal and bush environment. The Sarah C Gallery offers a range of artworks as well as gifts, prints and original pieces.

18 Thelma Road South,  
Mangawhai Heads  
Open most days 10am–4pm  
Ph: 027 572 7242  
[www.sarahcdesign.co.nz](http://www.sarahcdesign.co.nz)

## 4 MGTO Gallery



Visit MGTO Gallery, uniquely located beneath Maungaturoto's historic church, this artist-run gallery presents striking, rotating exhibitions of local artists. Just Minutes off SH1 you will find its well worth the visit.

136 Hurndall Street East,  
Maungaturoto  
Open 11am–4pm, Frid–Sun  
Ph: 021 202 1629  
[www.mgtogallery.co.nz](http://www.mgtogallery.co.nz)

## 5 White Rock Gallery



A volunteer collective of Kaipara-based artists and artisans, established in 2015 with the aim of fostering creativity in the local community. We provide space for creatives to exhibit their work and workshops to support creative endeavour.

5 Church Road, Matakoho  
Open daily 10am–4pm  
Ph: 021 026 78241

## 6 Woodwork Creatives



Overlooking the Wairoa River, Woodwork Creatives showcases handcrafted jewellery, chopping boards, artworks, and sculptures made from Ancient Kauri and recycled native timbers. Inspired by Northland flora and fauna and beautifully laser engraved.

5552 State Highway 12, RD2 Ruawai  
Open by appointment  
Ph: 021 106 0683  
woodworkcr@gmail.com

## 7 Tika Pono Toi Gallery &amp; Studio



Tika Pono Toi Gallery & Studio produces Māori carving, including Māori weaponry, gifts, and 21st keys, alongside community projects, commissioned pieces, creative wellbeing courses, an event venue, and an exhibition centre.

Shop 7, 3 Poto Street, Dargaville  
Open Wed–Sun 10am–3pm  
Mon–Tues by appointment  
Ph: 022 595 2109  
www.tikaponotoigallery.co.nz

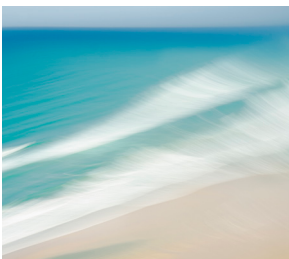
## 8 The Woodturners Kauri Gallery



Visit the working studio and gallery of one of NZ's leading wood turners, Rick Taylor who uses NZ ancient Kauri wood for most of his creations.

71 River Road, Dargaville  
Open daily 10:30am–5:30pm  
Ph: 027 448 9652  
www.thewoodturnersstudio.co.nz

## 9 Ocean View Art Gallery



Perched on a wild cliff top overlooking Ripiro beach is creative photographer Judy's dream studio. Winning awards nationally and internationally, Judy loves to share her work as well as her techniques through workshops. Come and enjoy her studio and images or enquire about workshops.

20 Mahuta Gap Road, Dargaville  
Open by appointment  
Ph: 021 048 8469

## Beaches, Landscape, Sculpture & Street Art

Whangārei is celebrated for its stunning natural landscapes, rich Māori culture, and diverse outdoor activities. The city is evolving into a vibrant art hub, featuring street art, sculpture trails, galleries, and events that highlight various forms of creative expression. Discover the beauty of Whangārei Falls, visit the Hundertwasser Art Centre with Wairau Māori Art Gallery and the Whangārei Art Museum, or venture to the Tutukaka Coast and Whangārei Heads to enjoy the stunning east coast beaches.

Whangārei also offers a range of dining, shopping, and accommodation options. The Hātea Loop (Huarahi o te Whai, or Pathway of Opportunity) provides a 4.2km, wheelchair-friendly trail that connects ten unique artistic spaces. This scenic loop, taking around 50-60 minutes to walk, follows the Hātea River and includes highlights such as the Town Basin Marina, two lifting bridges, children's playgrounds, and a sculpture and heritage trail. Key attractions along the Loop include William Fraser Memorial Park, the Clapham Clock Museum, the Town Basin playground, Reyburn House Art Gallery, Riverbank Theatre, Waka and Wave Millennium sculpture, Hihiaua Cultural Centre, and the Camera Obscura 'Timatatanga Hou,' featuring an upside-down projection of Whangārei's Bascule Bridge, Te Matau ā Pohe.

**10** Burning Issues Gallery



Burning Issues Gallery has showcased the best of local and national contemporary object art for 28 years, with all artworks being 100% handmade in NZ.

8 Quayside, Town Basin, Whangārei  
 Open daily 10am–5pm  
 Ph: 09 438 3108  
[www.burningissuesgallery.co.nz](http://www.burningissuesgallery.co.nz)

**11** InnoNative Economy



The InnoNative Economy supports whānau prosperity through indigenous collaboration, offering authentic handmade products with a native twist from indigenous-owned businesses across Aotearoa. Shop online or visit the Whangārei store.

14 Quayside, Town Basin, Whangārei  
 Open: Tue–Sun, 10am–4pm  
[innonativestore@mokonkz.co.nz](mailto:innonativestore@mokonkz.co.nz)  
[www.innonative.nz](http://www.innonative.nz)

**12** Collecte.



Our labels are designed and produced in Aotearoa, delivering attention to detail and fabric choice.

Objects and accessories sourced from local makers and international designers.

57a Walton Street Whangaree  
 Open Tues–Sat 10am–4pm  
 Ph: 027 308 8801  
[www.collecte.nz](http://www.collecte.nz)

**13** Hundertwasser Art Centre with Wairau Maori Art Gallery



A multi-faceted immersive experience celebrating Austrian painter, ecologist, architect and visionary Friedensreich Hundertwasser and contemporary Māori artists. Discover the largest collection of his original artworks outside of Vienna, an Afforested Roof, film theatre, Restaurant and Museum Shop.

81 Dent Street, Whangārei  
 Open daily 10am–4pm  
 Ph: 09 430 4230

[www.hundertwasserartcentre.co.nz](http://www.hundertwasserartcentre.co.nz)

## 14 Whangārei Art Museum



Whangārei Art Museum is Northland's public art gallery, the kaitiaki of the city's art collection and a centre for contemporary exhibition production in Whangārei, which presents exhibitions by local and international artists to a range of audiences.

91 Dent Street, Whangārei  
Open daily 10am–4pm  
Ph: 09 430 4240  
[www.whangareartmuseum.co.nz](http://www.whangareartmuseum.co.nz)

## 15 Hangar Gallery



Hangar Gallery owners Megan and Barry Squire are proud to promote local artists. Exhibitions in the villa gallery space change regularly. The variety of artwork on show includes prints, paintings, ceramics, glass, and jewellery. They also specialize in bespoke picture framing on site.

14 Cross Street, Regent, Whangārei  
Open Mon–Thu 9am–5pm, Fri  
9am–4pm, Open weekends by  
appointment.  
Ph: 09 438 1260

[www.hangarart.nz](http://www.hangarart.nz)

## 16 Quarry Arts Centre



The Quarry Arts Centre has supported Northland creatives since 1981, offering a peaceful, leafy space to connect, create, exhibit, and learn. Visitors can explore the gallery, café, community kilns, and vibrant workshop programme in a welcoming, creative environment.

21 Selwyn Ave, Whangārei  
Open Mon–Sat 9:30am–4:30pm  
Ph: 09 438 1215  
[www.quarryarts.org](http://www.quarryarts.org)

## 17 The Papermill



The Papermill is a vibrant creative space for artists with intellectual disabilities to create handmade paper and paper art from natural fibres and recycled paper.

38 Kamo Road, Kensington,  
Whangārei  
Open Mon–Fri 9am–3pm  
Ph: 09 459 1459  
[www.thepapermill.co.nz](http://www.thepapermill.co.nz)

## 18 Reyburn House Art Gallery &amp; Shop



[www.reyburnhouse.co.nz](http://www.reyburnhouse.co.nz)

Historic Art Gallery located in the Town Basin, owned and operated by the Northland Society of Arts. Visit the gallery shop, see the current exhibitions, walk our heritage rose gardens or peek in the Art Studio to see artists at work.

17 Reyburn House Lane, Town Basin, Whangārei  
Open Tue–Sat 10am–4pm & Sun 10am–2pm. In winter months we close at 2pm on Saturdays  
Ph: 09 438 3074

## 19 Hihiaua Cultural Centre

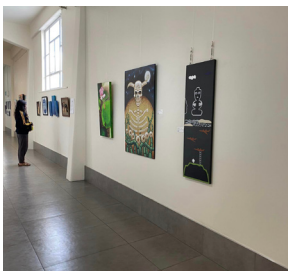


[www.hihiaua.org.nz](http://www.hihiaua.org.nz)

The Hihiaua Cultural Centre is a vibrant centre of Māori and cross-cultural excellence. The project fulfills aspirations of the past, to revive our Māori culture with integrity and authenticity by showcasing excellence in Māori arts, education and technology.

58 Herekino Street, Whangārei  
Open Mon–Thu 10am–4pm, Fri 10am–3pm, Sat–Sun 10am–2pm  
Winter hours closed Sunday  
Ph: 022 438 1943

## 20 The Quest Art Space



A collaborative and unique gallery space provided by Quest Whangārei and managed by Creative Northland. Experience regular exhibitions from local emerging and mid tier artists.

58 Bank Street, Whangārei  
Open daily 9am–4pm  
Ph: 09 430 0710  
[www.creativenorthland.com](http://www.creativenorthland.com)

## 21 The Shutter Room



The Shutter Room Gallery is a voluntary organization which supports photographers in Whangārei, by providing an exhibition gallery and a dedicated studio space. Exhibitions run for a month, changing at the beginning of the month.

Old Library Building, 7 Rust Ave, Whangārei  
Open Wed–Fri 10:30am–2:30pm, Sat 10am–1pm  
[www.theshutterroom.com](http://www.theshutterroom.com)

## 22 THE BACH



100% Northland made, unique, quality original art and craft fill this spacious gallery shop. Ceramics, glassware, wood, jewellery, pounamu, prints, hats, cards, giftware, kete, woven, knitted and felt wearables.

Town Basin, Whangārei  
Open daily 10am–4pm  
Ph: 09 438 2787  
[www.thebach.gallery](http://www.thebach.gallery)

## 23 Alan Squires Photography



Whangārei & Northland fine art landscape photography, with a particular focus on our glorious coast. Large scale black & white and colour digital photography displayed on a variety of media.

Studio 5/1 Rathbone Street,  
Whangārei  
Open Mon–Fri, by appointment  
Ph: 021 889 528  
[www.alansquiresgallery.co.nz](http://www.alansquiresgallery.co.nz)

## 24 Hennapriya by Vaanipriya



Vaanipriya is Whangārei based Henna Tattoo Artist who will beautify your body with her favourite art form. Contact her for all your henna needs: bridal, baby shower, birthday parties, customised designs or trial-a-tattoo. She looks forward to meeting you and sharing her culture.

Kensington, Whangārei  
Open by appointment  
Ph: 021 103 0397

## 25 Harrison Artworks



Andrew Harrison is a Painter based in Whangārei. Andrew relocated to NZ from London in 2021 and has setup a workshop to continue his artistic practice.

55 Fairway Drive, Kamo, Whangārei  
Open by appointment  
Ph: 021 081 83815  
[www.harrisonartworks.com](http://www.harrisonartworks.com)

26 Hang it All



Fine art technician available to install artwork / mirrors / shelving / TV's etc in domestic and commercial properties.

55 Fairway Drive, Kamo, Whangārei  
Open Mon–Fri 9am–5pm  
Ph: 021 081 83815  
info.hangitall@gmail.com  
www.hangitall.co.nz

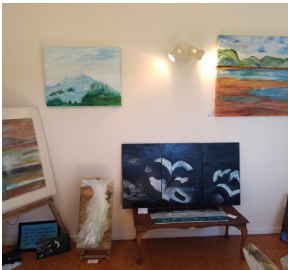
27 Fire & Earth



Fire & Earth is the working studios and Gallery of artists Peter Brammer and Julie Cromwell. Peter Brammer works with Corten steel creating public and private sculptures. Julie Cromwell has been working with clay for over 30 years, working in her own practice as well as tutoring in ceramics.

300 Otuhi Road RD9, Whangārei  
Open by appointment  
Ph: 021 234 5245

28 Jane Whiting



Jane Whiting is an established painter of 50 years. Jane teaches and exhibits at Quarry Arts Centre and Waiheke Community Art Gallery regularly. Her work was published in World Important Artists from USA 2015 and other local books.

25/71 Manganese Point Road, Gate 2 Headland Farm Park, Tamaterau, Whangārei  
Open by appointment  
Ph: 027 5698822

29 Cecilia De Donatis Art



I paint and sculpt magical realist pieces that bring together inner and outer realities. My work is conceived at the crossroad between the earthly and the ethereal, dreamy and bizarre. I also create decorative and functional pieces, always bringing at least a touch of quirky into the room. Direct sales and commissions.

Parua Bay  
Ph: 020 417 21317  
Insta: @ceciliadedonatisart

## 30 Amie Redpath



Amie Redpath, a stone sculptor, has been creating works that aim to reconnect our humanity to the oceans, land, our ancestors and our identities. Her works range from sculpture, jewellery and functional pieces, like the mortar and pestle. Amie has been sculpting for over 10 years. [www.homeground.nz](http://www.homeground.nz)

347 Robinson Road, Whangārei  
Open by appointment  
Ph: 022 409 7797

## 31 Hiku



Hiku is a unique art and music gallery in Hikurangi, Whangārei, showcasing Northland artists.

55 King Street, Hikurangi, Whangārei  
Open Thur–Sun 10am–2pm  
or by appointment  
Ph: 021 892399 or 021 403370

## 32 Gallery &amp; Café Helena Bay Hill



A wide-ranging collection of work by established and emerging New Zealand artists, including many from Northland and contemporary Māori and Pacific creators. Featuring paintings, wood art, handmade furniture and more.

1392 Old Russell Road, RD4,  
Hikurangi, Helena Bay  
Open daily 10am–5pm  
Ph: 09 433 9616  
[www.galleryhelenabay.co.nz](http://www.galleryhelenabay.co.nz)

## 33 Tutukaka Gallery



Visit Tutukaka Gallery for beautiful local art and affordable gifts including paintings, prints, jewellery, glass art and weaving.

11 Marina Road, Tutukaka  
Summer: 15th Dec - Easter, 7 Days  
a week, 10 am–5pm  
Winter: Fri, Sat & Sun 10am–5pm  
Ph: 027 451 9600



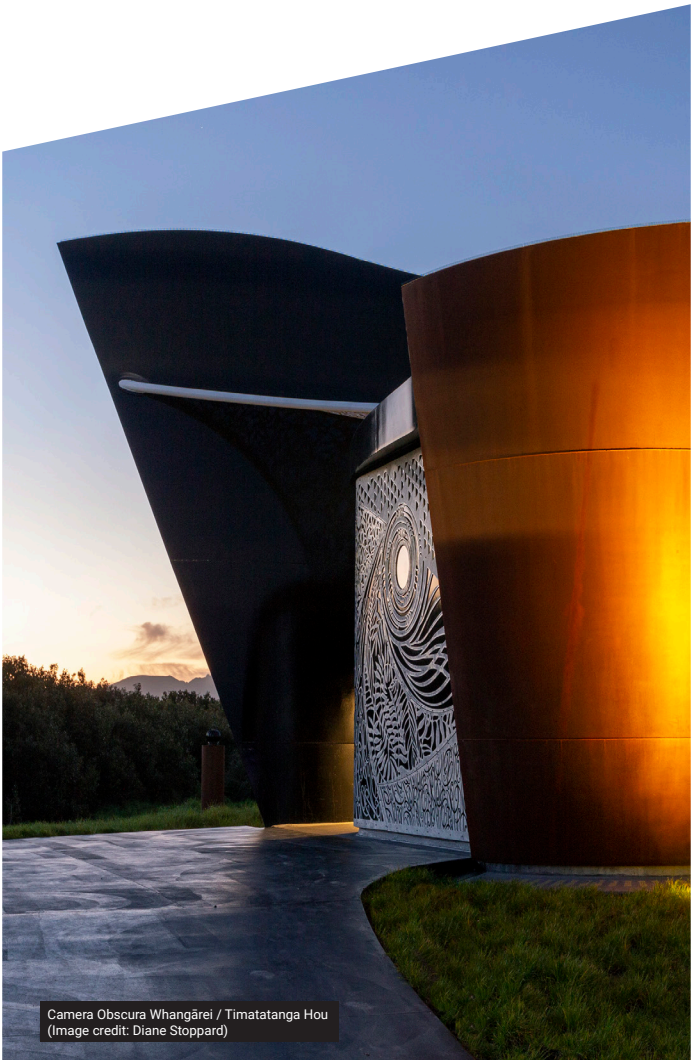
Scan the QR code  
to discover Whangārei's  
Sculpture and Art Trails



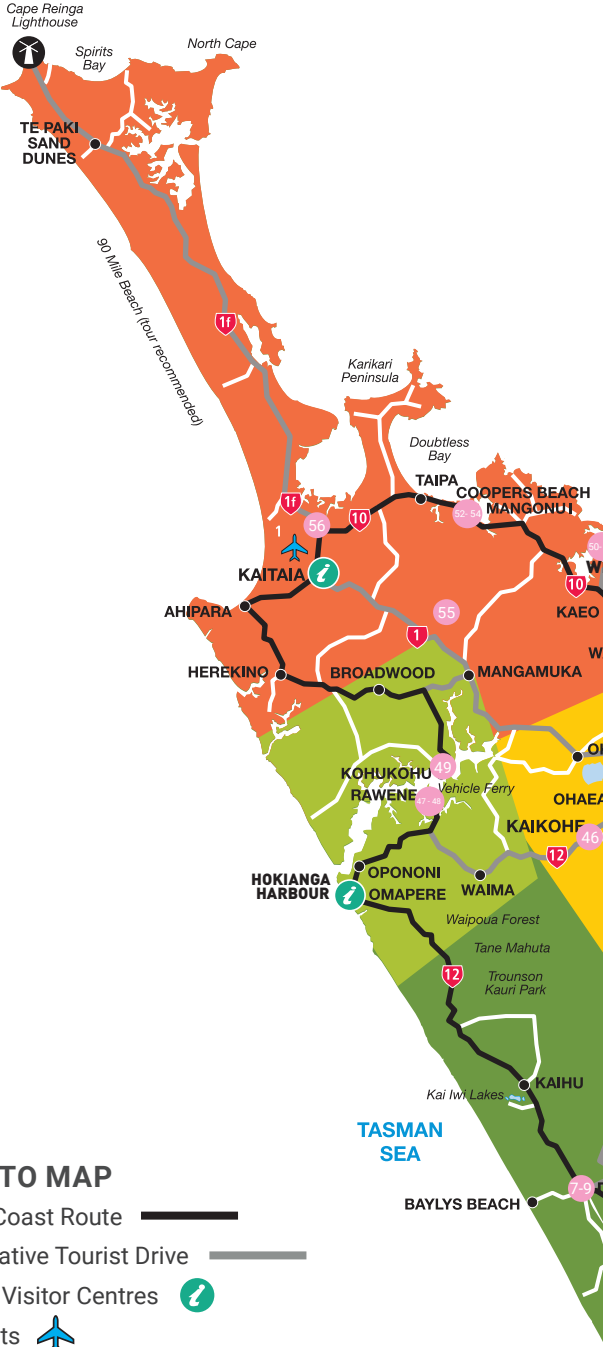
Whangārei District  
**Love it Here!**

## Camera Obscura: A Whangārei Gem

Whangārei's art scene includes the Camera Obscura 'Timatatanga Hou,' a sculptural steel structure where visitors walk inside to see an upside-down projection of Whangārei's Bascule Bridge (Te Matau ā Pohe), along with vehicles, boats, people, clouds, and water. This unique attraction offers a simple yet fascinating light projection experience, with a movable aperture for adjusting the image. As one of the largest camera obscura sculptures in the Southern Hemisphere, it stands out as a remarkable artistic feature.



Camera Obscura Whangārei / Timatatanga Hou  
(Image credit: Diane Stoppard)




**KEY TO MAP**

Twin Coast Route 

Alternative Tourist Drive 

i-SITE Visitor Centres 

Airports 

### THE REGIONS

- Far North
- Bay of Islands
- Hokianga
- Whangārei
- Kaipara



## 34 Kings Theatre Creative



Historic theatre venue & exhibition space (est.1936). Showcasing a wide range of creatives, with three studios and a backstage performance/exhibition space. Hosting solo and group exhibitions, events, live performance, workshops and creative tours.

80 Gillies Street, Kawakawa  
Open Oct–Apr or by appointment  
Ph: 021 024 57571  
fb.com/kingstheatrecreative

## 35 Ann Winship Art Studio



Visit Ann Winship's home studio/gallery featuring Northland landscape & seascape oil paintings, painted journals, trinket boxes, and copper wire sculptures. For over 12 years, Ann has created unique copper "spirit vessels" with flowing forms and dramatic shadows.

52 B Amuri Road, Kerikeri  
Open by appointment  
Ph: 021 224 4552  
www.annwinship.com

## 36 Art at Wharepuke

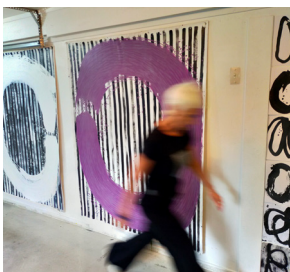


[www.art-in-newzealand.co.nz](http://www.art-in-newzealand.co.nz)

Art at Wharepuke Gallery and Non-Toxic Printmaking studio run by award winning printmaker Mark Graver RE - studio offers workshops, residential courses, open access printmaking. 1km Sculpture Trail through subtropical Garden of National Significance. Restaurant and accommodation on-site

190 Kerikeri Road, Kerikeri  
Open daily 10am–5pm  
Ph: 021 139 0894

## 37 Jane Molloy-Wolt Art Studio



NZ painter, printmaker, sculpture artist Jane Molloy-Wolt has been the finalist in many art awards and has been painting and exhibiting since 2001 with her works in many private collections around the world. Jane has a studio space open by appointment to view and purchase her artwork.

Based in Kerikeri  
Open by appointment  
Ph: 021 0824 2891

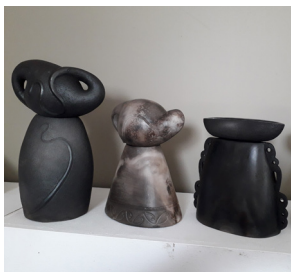
## 38 Kaleo Designs



NZ Art to Wear. Explore Kaleo's unique local style where they showcase original NZ designs by local artists on their signature men's Aroha shirts, womens wear, screen printed apparel, accessories & unique gifts. Everything in store features their exclusive prints.

459 Kerikeri Road, Kerikeri  
Open daily 9:30am–5:30pm  
Ph: 027 937 4595  
[www.kaleo.co.nz](http://www.kaleo.co.nz)

## 39 Uku Toi Studio and Gallery



Uku Toi Gallery is owned and operated by Rhonda Halliday from her home. She is a member of Ngā Kaihanga Uku, a Māori clay collective, and also Te Tai Tokerau Māori Arts Collective. She sells her own clay pieces and also promotes the work of other artists from these collectives.

33a Tyree Road, Kerikeri  
Open by appointment  
Ph: 027 458 8514

## 40 Little Black Gallery



[www.littleblackgallery.co.nz](http://www.littleblackgallery.co.nz)

Little Black Gallery is a curated art and design space in Kerikeri, showcasing original work by Northland and New Zealand artists. Featuring painting, jewellery, ceramics, sculpture and object-based design, the gallery offers a relaxed space to discover quality craftsmanship and distinctive works.

394B Kerikeri Road, Kerikeri  
Open Tue–Sat 10am–4pm  
Ph: 09 407 1311

## 41 Lakehouse Studio



Lakehouse Studio is a working studio gallery space and sculpture in the garden.

59 Stanners Road, RD2, Kerikeri  
Open by appointment  
Ph: 09 407 3383  
[www.lakehousetudionz.co.nz](http://www.lakehousetudionz.co.nz)

## 42 CERAMIC ART+DESIGN STORE



The gallery stocks work made exclusively by artist Mark Mitchell. Ranging from bespoke tableware, sculptural vessels, ceramic and glass wall pieces and garden sculpture.

681 Puketona Road, Haruru Falls,  
Bay of Islands  
Open Fri–Sun 10am–4pm  
Or by appointment  
Ph: 022 038 2112

## 43 The Providore's Gallery



Art & Nature working together. Locally made Northland Art & product. Accessible by passenger ferries leaving Paihia & Russell up to 4 times a day.

Otehei Bay, Urupukapuka Island.  
Subject to ferry timetable. Phone  
0800 397 567 for enquiries & ferry  
booking.

Ph: 021 869 098

## 44 Pete Cernis



Pete Cernis is an artist working in many mediums including oil paint, charcoal, photography. Come visit his open working studio located in the beautiful town of Russell.

6169a Russell Whakapara Road,  
Russell  
Open by appointment  
Ph: 021 361 952  
[www.petecernis.com](http://www.petecernis.com)  
[www.throughthelens.nz](http://www.throughthelens.nz)

## 45 South Sea Art



Nestled in the main street of Russell, South Sea Art exhibits an eclectic array of original & print artwork, sculpture, woodwork, ceramic and jewellery from local Northland artists.

15 York Street, Russell  
Winter: Open daily, 11am–4pm  
Summer: Open daily, 10am–5pm  
Ph: 09 403 7268

## 46 Passion 8



Passion 8 is an eclectic mix of local handmade arts, crafts, and collectibles situated in the 1929 Dairy Co-op building. We serve coffee, cake and host exhibitions and workshops and cosy Air BnB accommodation.

9 Thorpe Road, Kaikohe  
Open Mon, Fri 10am–4pm,  
Sat 10am–1pm  
Ph: 027 246 1843

## 47 No 1 Parnell



Step inside No 1 Parnell and enjoy a coffee while watching life unfold across the water. Browse a rich selection of artwork by regional artists, books by Far North writers, and women's designer fashion boutique.

1 Parnell Street, Rawene  
Open: Mon–Sun, 8am–3pm  
09 405 7520  
[www.no1parnell.co.nz](http://www.no1parnell.co.nz)

## 48 WILKIE FINE ARTS



WILKIE FINE ARTS in the historic town of Rawene, is an intimate gallery specialising in landscape oil paintings by the artist Chris Wilkie, and other high-quality practitioners.

4 Parnell Street Rawene  
Open: Fri–Mon, 11am–4pm  
Or by appointment  
0211207970  
[www.chriswilkienzartist.co.nz](http://www.chriswilkienzartist.co.nz)

## 49 Village Arts Gallery



Village Arts is a contemporary white wall gallery that reflects the diversity of artists in Hokianga, exhibiting work from a wide range of mediums.

1376 Kohukohu Road, Hokianga  
Open Tues–Sun, 10am–3pm  
Ph: 09 405 5827  
[www.villagearts.co.nz](http://www.villagearts.co.nz)

## Art, Culture, & Heritage in Stunning Landscapes

Discover a region rich in cultural history, with diverse landscapes, breathtaking beaches, and a warm, subtropical climate. The Far North offers something for everyone, from exploring Māori culture and local stories to marvelling at natural wonders and seeking thrilling adventures. Spend your mornings visiting museums and heritage sites, then spend your afternoons exploring numerous art galleries, each showcasing a rich array of artworks for sale.

### 50 Bohemian Picnic Art Store and Gallery



Gallery-Studio and unique quirky gift store of NZ Artist Sandra Jane (suleski) Nestled amongst her idyllic home surrounds in Whangaroa Harbour. Inspired curated collectables and original works and prints.

44B Wainui Road, RD1 Whangaroa  
 Summer: Thurs–Sun 11am–3pm,  
 Winter: Sat 11am–3pm, Autumn &  
 Spring: Thurs–Sat 11am–3pm, or  
 by appointment  
 Ph: 027 2774634

### 51 Jasmine Keir



Unique luxury metal artworks inspired by nature, movement, and modern design. Blending ancient influence with contemporary style, each bespoke piece creates a striking statement for homes, interiors, and architectural spaces. Custom commissions available.

Whangaroa Harbour, Northland  
 Open by appointment  
 Ph: 021 644 105  
[www.jasminekeir.nz](http://www.jasminekeir.nz)

### 52 Jiwa Steel



Jiwa Steel create stainless steel fish art including single & multi fish sculptures. Our techniques have been refined over the last 12 + years with airbrush painting being our latest addition.

187 Backriver Road, RD3, Mangonui  
 Open by appointment  
 Ph: 021 1543131  
[www.jiwasteel.com](http://www.jiwasteel.com)

## 53 Art Gallery at The Old Oak



The gallery features the work of local artists and artworks that reflect the character of the Far North. Paintings, prints, weaving, ceramics, and more. Also featuring custom picture framing services.

66 Waterfront Drive, Mangonui  
Hours vary seasonally, please check our website ([theoldoak.co.nz](http://theoldoak.co.nz)) or phone 09 406 1250

## 54 Mangonui Gallery/Exhibit A



Located on the picturesque Mangonui Harbour Waterfront in the Historical Mangonui Courthouse. Fine art and craft of exceptional quality, both timeless and contemporary from a collective of Far North artists.

126 Waterfront Drive, Mangonui  
Open daily 10am–4:30pm  
Ph: 09 406 2333  
[www.mangonuigallery.co.nz](http://www.mangonuigallery.co.nz)

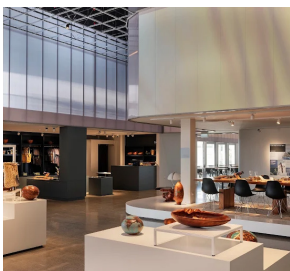
## 55 Garden Sculpture NZ



Hand crafted outdoor sculptures with stone like finish. Original NZ nature and Pacifica designs with inlays of stone, shell, copper, glass and stainless steel.

702 Honeymoon Valley Road, Peria, Kaitia  
Open by appointment  
Ph: 021 034 2118  
[www.gardensculpture.co.nz](http://www.gardensculpture.co.nz)

## 56 Ka Uri Gallery &amp; Shop



Step into the Gallery at Kā Uri in Awanui, celebrating Northland's heritage through locally crafted art and unique exhibits. Discover traditional and contemporary Māori art, handcrafted pieces, and inspiring works that share the stories of the Far North.

235 State Highway 1, Awanui  
Open: Tue–Sun, 8am–2:30pm  
ph: 09 406 7172  
[www.ka-uri.com](http://www.ka-uri.com)

### Te Ahu Centre



Cnr of SH1 & Mathews Ave, Kaitaia  
[www.kaitaia.co.nz](http://www.kaitaia.co.nz)

### Turner Centre



43 Cobham Road, Kerikeri  
[www.turnercentre.co.nz](http://www.turnercentre.co.nz)

### Octagon Theatre



13 Aubrey Street, Whangārei  
[www.octagontheatre.nz](http://www.octagontheatre.nz)

### Whangārei Quarry Gardens



37A Russell Road, Kensington  
[www.whangareigardens.org.nz](http://www.whangareigardens.org.nz)

### ONEONESIX



116 Bank Street, Whangārei  
[www.oneonesix.nz](http://www.oneonesix.nz)

### Whangārei Theatre Company



71 Reyburn House Ln, Whangārei  
[www.whangareitheatrecompany.org.nz](http://www.whangareitheatrecompany.org.nz)

### Forum North



7 Rust Avenue, Whangārei  
[www.venuesandeventshangarei.co.nz](http://www.venuesandeventshangarei.co.nz)

### Semenoff Stadium



51 Okara Drive, Whangārei  
[www.venuesandeventshangarei.co.nz](http://www.venuesandeventshangarei.co.nz)

Northland Art Guide

Designed and sponsored by Creative Northland

# CREATIVE NORTHLAND

We Connect & Grow Northland's  
Arts, Culture & Heritage

Grow  
YOUR  
REACH

*Haere Mai*

Talk to us about  
*FUNDING ADVICE  
MARKETING  
& VENUES*

*Toi Te Tai Tokerau*

We look forward to welcoming you  
[www.creativenorthland.com](http://www.creativenorthland.com)



*In partnership with*

