

# Northland Heritage Guide

**Te Ara Taonga Tuku Iho o Te Tai Tokerau**





**Front Cover Credit**

Artist: James O'Shea

Artwork Title: Aroha Mai, Aroha Atu

Medium: Digital Photography

## **Nau mai, haere mai, piki mai ki Te Tai Tokerau**

Welcome to the taonga (treasure) that is Te Tai Tokerau Northland. Our people are friendly and our connection to the whenua (land) is deep. We nurture our future and treasure our past. We celebrate our trees and oceans whilst finding delight in our wildlife. We are creative and engaging, as is our place. You are most welcome to spend time with us and learn more about our rohe (area) and why it is considered the birthplace of Aotearoa New Zealand.

### **Kia whakatōmuri te haere whakamua: I walk backwards into the future with my eyes fixed on my past.**

Through this Heritage Guide you can find jewels that will connect you with your place in Northland. We have gathered together information on some of the countries most engaging museums and experiences. You will find where they are, what stories they tell, and when to visit to help you plan your journey. There is something for every visitor, from the spectacular whaling history of the Far North at Butler Point Whaling Museum, to the road trip journeys captured at the Packard Motor Museum. Foundational nation building events are the focus at Waitangi and Russell Museum, while you can connect with the people of the Hokianga at the Hokianga Museum, just above the magnificent Tāne Mahuta (Lord of the Forest) in Waipoua Forest.

We offer you the opportunity to relax and enjoy your journey through time with us as we traverse, together, our past, present and future.

Nga mihi nui ki a koutou

## **NORTHLAND MUSEUMS ASSOCIATION**

## There is so much to see and do in Northland

Northland/Te Tai Tokerau contains a wealth of significant historical heritage, therefore, in a historic and cultural sense, is rightly considered the 'Cradle of the nation'.

There are approximately 12,000 recorded archaeological and historic sites in Northland, of which approximately 3000 are on public conservation land, managed by the Northland DOC office. There are a range of different site types, from middens to Mission Stations, and prehistoric gardening systems to World War II gun emplacements.

### Path to Nationhood, Northland

Heritage NZ has created an amazing App for you to experience history through new eyes - Download any of the six free Path to Nationhood tours for iPhones and iPads (Apple App store or i-tunes) or Android (Google Play), and experience the heart and soul of early New Zealand's Northland, where Māori and Pākehā first met, traded, philosophised, fought, loved – and established a nation like no other.

One of these tours explores the Bay of Islands (Kororareka), known not only for its beauty and climate, but also as one of New Zealand's most significant historic areas. The area was the scene of early contact and conflict between Māori and European settlers, who began arriving in the late eighteenth century.

### These are some of the Heritage sites you can experience...



**Kerikeri Mission:** In a picture-perfect setting in the Bay of Islands one of New Zealand's premier historic sites preserves the stories of tumultuous times when Māori met missionaries and life was changed forever.



**Pompallier Mission and Printery:** Situated in a beautiful waterfront setting in the Bay of Islands, this French-style printery and tannery combines momentous Māori and Paheka history, glorious gardens, a quaint cafe, and hands-on fun.



**Waimate Mission:** New Zealand's second oldest building preserves missionary, farming and architectural history, including stories of important early encounters between Māori and Europeans.

Another fabulous area to explore is the Hokianga, rich in Māori history with spectacular views of the coastline and Hokianga harbour. At Arai Te Uru there is a Recreational Reserve walk where Kupe walked when he first landed in Aotearoa.

On your way visit...



**Māngungu Mission:** Māngungu was established on the shore of the spectacular Hokianga Harbour in 1828 as a Wesleyan Mission station. It was built in 1838-1839 for the Reverend Nathaniel Turner.



**Clendon House:** This fascinating home belonged to Captain James Reddy Clendon, ship owner and trader. Captain Clendon was in the thick of the earliest Māori and Pakeha interaction and was a witness to the Treaty of Waitangi.

## Northland Journeys

The Twin Coast Discovery Highway is just the beginning of your trip, but it will lead you to byways that take you deeper into our amazing stories and even closer to small towns with big hearts; you will experience our unforgettable natural environment and the timeless places we call home. Each 50-150 kilometre journey will deliver an enjoyable half to full day of exploration. Plan your route around Northland by downloading these free printable journey maps to find these hidden gems and use this guide to create your artistic itinerary.

**Here are seven Northland Journey Maps, you can download from [www.northlandnz.com](http://www.northlandnz.com)**

- All About Islands
- Ancient Kauri Trail
- Into the Wild Blue Yonder
- The Secret Coast Route
- Where Giants Gather
- Te Ara Coast to Coast
- Wandering with Ancestors

**Culture and Heritage Links to help you in your itinerary planning:**

- **Explore Heritage Sites in Northland**  
<https://www.doc.govt.nz/our-work/heritage/by-region/northland/>
- **Northland Historical Overview**  
Discover prehistoric settlement and industry.  
<https://www.doc.govt.nz/our-work/heritage/by-region/northland/northland-historical-overview/>
- **Heritage New Zealand**  
Unlock our unique stories, cultural and heritage places.  
<https://www.heritage.org.nz/>

## Take a 7-day journey around Northland

Road trips are by far the best way to explore a place...

**Day 1:** Visit the Sculptureum in Matakana taking the scenic route through Leigh, Pakiri, and Te Arai. Finishing the day with dinner at Mangawhai Tavern, where you might catch a live band.

**Day 2:** Explore Mangawhai Museum, then enjoy coffee and cake at Eutopia Café. Visit the Kauri Museum in Matakoho.

**Day 3:** Discover Trounson Kauri Park and take a night tour of Waipoua Forest. Visit Manea Footprints of Kupe for an adventure into Māori heritage.

**Day 4:** Head to Rawene to see Clendon House, then take the ferry to Kohukohu. Arrive in Kaitaia, relax at Ahipara Beach, and enjoy fish and chips for dinner.

**Day 5:** Head to Cape Reinga and visit the iconic lighthouse. Then on your way down to Mangonui stop at Pūheke Beach on the Karikari Peninsula and the Karikari Winery. Stay overnight in Paihia.

**Day 6:** Visit the Waitangi Treaty Grounds, Aotearoa's most important historic site. Afterwards, stroll through Paihia, then take the passenger ferry to Russell and visit Christ Church, New Zealand's oldest surviving church. Enjoy dinner at the Duke of Marlborough on the waterfront.

**Day 7:** Stop in Kawakawa to see the Hundertwasser Toilets, then visit Te Honga Centre and then stop in to Ruapekapeka Pā on the way to Whangārei and if time allows, check out the Whangārei Art Museum or Kiwi North.

1

### Puhoi Heritage Museum



Where Bohemia meets Aotearoa! On your visit, explore the unique history of Puhoi. Includes the Bohemian and Māori connection from 1861 to the present day. View the model of the Puhoi Village in early 1900 and learn more with Audio Guides as you tour the Museum. We hold extensive photographic and genealogical records for some families going back to 1700's. Group tours with full commentary can be arranged.



77 Puhoi Road, Puhoi  
Open: Daily, 11am–3pm  
Ph: 09 422 0852  
[www.puhoiheritagemuseum.co.nz](http://www.puhoiheritagemuseum.co.nz)

## 1a Warkworth & District Museum



Just north of Auckland, the Warkworth Museum is situated in the stunning Parry Kauri Park, which is home to the McKinney Kauri, one of the largest Kauri trees on the north east coast. After walking through the park, visit the Museum which tells the story of early European settlement, timber felling, gum digging and boat building. The growth of the Warkworth district is showcased through displays containing many heritage items, photographs and textiles of the era.



32 Tudor Collins Drive, Parry Kauri Park, Warkworth  
Open: Daily, 10am–3pm  
Ph: 09 425 7093  
[www.warkworthmuseum.co.nz](http://www.warkworthmuseum.co.nz)

## 2 Albertland Heritage Centre and Museum



The Albertland Heritage Museum in Wellsford was set up to chronicle the story of the Albertland Non-conformist Society of the 1860s. The museum is dedicated to researching, preserving and exhibiting the stories of Albertland and regional histories. The museum is home to a rich collection of objects, archives and the extensive Harold Marsh photographic collection.



Library Plaza, 15 Port Albert Rd, Wellsford  
Open: Wed–Sat, 11am–3pm  
Sun, 1pm–3pm  
Ph: 09 423 8181  
[www.albertlandmuseum.co.nz](http://www.albertlandmuseum.co.nz)

### 3 Mangawhai Museum



If stories are treasure, Mangawhai Museum is full to bursting.

An epic battle, sunken gold bullion, a secret gathering with noble goals, and the modern struggle to save the Fairy Tern. All these stories plus a café and gift shop full of kids' favourites and local "Handmade in Mangawhai" items. You'll never forget Magical Mangawhai and the treasures we have in store for you.



191 Molesworth Drive, Mangawhai  
Open: Summer, Sept–Apr, Daily 10am–4pm. Winter, May–Aug, 10am–2pm weekdays, 10am–4pm weekends  
Ph: 09 431 4645  
[www.mangawhai-museum.org.nz](http://www.mangawhai-museum.org.nz)

### 4 The Kauri Museum



Deep in the heart of an ancient forest that's gone, the Kauri Museum celebrates one of the world's greatest trees and honours our relationship with it. We share stories of courage and determination, tragedy and triumph, boundless hope and unfathomable loss: kauri making a nation. Dig deeper here. In 4500sqm of exhibition space, enjoy "The Great Indoors" to explore a treasure of "The Great Outdoors".



5 Church Road, Matakoho  
Open: Daily, 9am–5pm (Closed Christmas Day).  
Cafe open 10am–3pm.  
Ph: 09 431 7417  
[www.kaurimuseum.com](http://www.kaurimuseum.com)

## 5 Dargaville Museum



Dargaville Museum is situated in Pou Tu o Te Rangi Harding Park overlooking the town and the Northern Wairoa River. The collection, arranged over several halls includes displays on the Rainbow Warrior, shipwrecks salvaged from the wild west coast, a hall depicting the lives of the gumdiggers and the machinery used in processing the kauri gum, and a collection of early Māori taonga including a rare ancient waka. Pioneer displays, replicas of local retail shops, a world-renowned piano accordion collection, are all guaranteed to keep visitors engaged for an hour or more.



Pou Tu o Te Rangi Harding Park,  
Dargaville  
Open daily except Christmas Day  
and ANZAC Day morning.  
9am–5pm, 1 Nov to 31 March  
9am–4pm, 1 April to 31 Oct  
Ph: 09 439 7555  
[www.dargavillemuseum.co.nz](http://www.dargavillemuseum.co.nz)

## 6 Kaipara Heritage Machinery Museum



Jewel on the Hill – Kaipara Heritage Machinery Museum built overlooking the stunning view of Dargaville. Displaying machinery, equipment and tractors once used by the pioneers of the Kaipara District. Attractions include a Ruston Proctor Steam Engine and our 100+ year old fully operational woolshed. Recent additions from the famous 'Kumara Box' include Barry Searle, May and Warren Suckling's Marine and Archaeological Collection. Follow the Ancient Kauri Trail and we are located within a stone's throw from the wonderful Dargaville Museum.



32 Mt Wesley Coast Road,  
Dargaville  
Open: Daily, 9am–3:30pm  
Ph: 09 556 5501  
[kvmcdargaville.weebly.com](http://kvmcdargaville.weebly.com)

## 7 Hokianga Museum and Archives Centre



Hokianga Museum is home to objects and records from Hokianga whānau including photographic and written histories from many of the bi-cultural families who lived there. There are also displays featuring the Māngungu Treaty signing, 1893 Suffrage featuring Hokianga women who voted that year, the Dog Tax rebellion, the 1918 influenza pandemic, the timber and dairying industries and accounts of shipwrecks including the S.S. Ventnor. The museum has Russell Clark's original statue of Opo the dolphin.



14 Waianga Place, Omapere,  
Hokianga  
Open: Mon, Wed & Sat,  
10am–2pm  
Or by appointment.  
Ph: 09 405 8498  
hokiangaahs@gmail.com  
www.hokiangamuseum.co.nz

## 8 Clendon House / Heritage NZ



Built in the 1860s, Clendon House was the home of Captain James Reddy Clendon and Jane Takotowi Clendon. Their personal documents and photographs formed the foundation of the 'Clendon Papers', incorporated into the UNESCO Memory of the World register in 2023.



8 Clendon Esplanade, Rawene  
Open: May–Oct, Sat & Sun. Nov–  
Apr, Fri, Sat & Sun, 10am–4pm  
Group bookings are available on  
closed days by appointment.  
Ph: 09 405 7874  
www.heritage.org.nz

## 9 Te Ahu Museum



Formerly known as the Far North Regional Museum, it holds a remarkable collection. Its purpose is to illuminate the stories and histories of the Far North District (Te Hiku o te Ika) of New Zealand. Treasures among the pre-European Māori collection include pounamu, early carvings and the 500 year-old skeletal remains of the extinct dog. Other major themes are gum digging and the Dalmatians, kauri gum and timber, early shipwrecks and missionary pioneers.

The museum has a large archives collection. It is the proud home of the first European item left in New Zealand, the mighty de Surville anchor.



Cnr South Rd & Mathews Ave,  
Kaitaia  
Open: Mon–Fri, 8:30am–4:30pm  
Ph: 09 408 9457  
[www.teahumuseum.nz](http://www.teahumuseum.nz)

## 10 Matthews Vintage Collection



Experience a unique opportunity to view a privately owned collection of vintage cars and machinery used in farming dating back to the early 1900's. Accumulated and restored by an avid vintage enthusiast over the last 60 years covering over 1100 square metres of display area. View a range of traditional farming, household and pioneering appliances, some of which have been used by the Matthews Family over the last century, dating back to the late 1800s. There are also Moa bones on display, which were found locally.



4365 State Highway 10  
Open: Sun–Fri, 1pm–5pm  
Ph: 09 406 0203

## 11 Butler Point Whaling Museum



Captain Butler's 1840s homestead has been restored and surrounding garden is rated a 5-Star Garden of Significance. Situated beside the waters of the inner Mangonui harbour, once a shelter for the whaling ships who visited for essential supplies in the 1800s. The Museum includes a fully equipped whaleboat, scrimshaw and extensive art of the whalers. Butler Point preserves and interprets the way people lived, the way they worked and the tools of the ocean hunt. The grounds include walking tracks, heritage trees, pa site and the final resting place of Captain Butler.



Open: by appointment only  
Book online: [www.butlerpoint.co.nz](http://www.butlerpoint.co.nz)  
Ph: 0800MUSEUM (687386)

## 12 Whangaroa County Museum



Whangaroa Museum provides graphic and historical records of the rich and diverse cultural history and heritage of the communities and early families of Whangaroa. 1809 Whangaroa Harbour was the setting of the Boyd Tragedy and we hold many recovered items from the Boyd. Our O Te Raki Room houses an extensive collection of Māori artefacts, photographs and documents which provide insights into the culture, past and present, of the first people of Whangaroa. The sacrifices made by the men of our county in the wars are recognised in the Remembrance Room.



23 Leigh Street, Kaeo  
Open: Tue–Fri, 10.30am–2.30pm  
Ph: 09 405 0050  
[whangaroamuseum.weebly.com](http://whangaroamuseum.weebly.com)

**13 Kerikeri Mission Station**



Established in 1819, the Kerikeri Mission Station is one of the first places in New Zealand where Māori invited visitors to live among them. Built under the protection of local chiefs who were keen to harness the trade and technology of Europe, Kerikeri Mission Station grew amidst a backdrop of tribal warfare and ever-increasing visits from foreign ships. At the heart of the Mission Station are two of the country's oldest buildings; the Stone Store and Kemp House are both cornerstones of a broader historical landscape and essential sights for heritage-lovers.



218 Kerikeri Road, Kerikeri  
 Open: Daily, 10am–5pm  
 Ph: 09 407 9236  
[www.visitheritage.co.nz](http://www.visitheritage.co.nz)

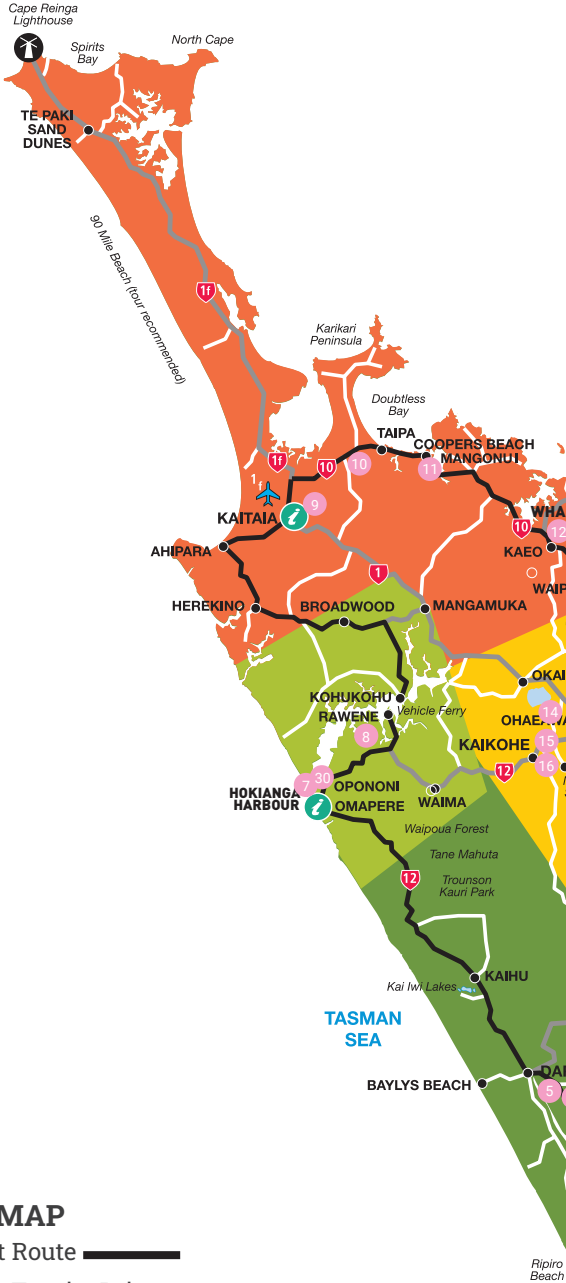
**14 Te Waimate Mission / Heritage NZ**



Aotearoa New Zealand's second oldest building, Te Waimate Mission preserves missionary farming and architectural history, with stories of important early interactions between Māori and Europeans.



344 Te Ahu Ahu Road, Waimate North  
 Open: May–Oct, Sat & Sun 10am–4pm. Nov–Apr, Fri, Sat & Sun, 10am–5pm.  
 Ph: 09 405 9734  
[www.visitheritage.co.nz](http://www.visitheritage.co.nz)



**KEY TO MAP**



Twin Coast Route 

Alternative Tourist Drive 

i-SITE Visitor Centres 

Airports 

## THE REGIONS

-  Kaipara
-  Kauri Coast
-  Far North
-  Bay of Islands
-  Whangārei



## 15 Kaikohe Fire Museum



We hold the history of the Kaikohe Volunteer Fire Brigade including the very first helmet and pair of boots made by the local saddler, Tom Guerin. Tom was also an original brigade fire fighter. The fire station still stands today across from our Museum and is Kaikohe's oldest building. We have a collection of model fire engines, fire fighting memorabilia and other items that include the history of the Manchester Unity I.O.O.F odd fellows Loyal Hokianga Lodge, WWII memorabilia, antique sewing memorabilia, photo history of Kaikohe, and more.



Find us behind the shops off Broadway, down the service lane of Wihongi Street, Kaikohe.  
 Open: By appointment  
 Ph: 09 401 0706  
 M: 021 0345 496

## 16 Pioneer Village Kaikohe



The perfect spot to take a break, only 80m off the cycle trail, secure bike parking, toilets, WIFI, E bike charging, information and Coffee! Pioneer village is a journey into the Past. Don't miss this opportunity to explore and discover a true hidden gem. Sitting in the heart of Kaikohe, it has something for everyone. At your leisure take a self-directed tour. Enjoy a trip down memory lane, with our extensive collection of heritage buildings, machinery, artefacts and displays whilst admiring the beauty of our gardens and welcoming atmosphere.



1A Recreation Road, Kaikohe  
 Open: Mon–Fri, 10am–2pm  
 Group bookings welcome, with weekend visits by appointment and venue hire available.  
 Ph: 09 401 01816  
[info@pioneervillage.org.nz](mailto:info@pioneervillage.org.nz)  
[www.pioneervillage.org.nz](http://www.pioneervillage.org.nz)

## 17 Waitangi Treaty Grounds



Embark on a journey of discovery at the iconic Waitangi Treaty Grounds, New Zealand's most significant site. You will be transported back to the pivotal moment in 1840 when Māori chiefs and representatives of the British Crown gathered to sign the Treaty of Waitangi, forging a partnership that would shape the nation's future. Admission includes a guided tour, cultural performance, two interactive museums, Treaty House, Te Whare Rūnanga and traditional Māori waka taua. Plus sample Māori culture and cuisine at the Hāngī and Concert evening experience.



1 Tau Henare Drive, Waitangi  
 Open: Daily, 1 Feb–24 Dec: 9am–5pm, 26 Dec–31 Jan: 9am–6pm.  
 Building closed on Christmas Day and Waitangi Day (6th February)  
 Ph: 09 402 743  
[www.waitangi.org.nz](http://www.waitangi.org.nz)

## 18 Russell Museum



Russell Museum – Whare Taonga o Kororāreka. Stories of international significance depicting the eastern Bay of Islands, the arrival point of New Zealand's first settlers - the Polynesians, and their subsequent encounters with Europeans i.e. explorers Captain Cook, Marion Du Fresne, and naturalist Charles Darwin. Key histories include the Battle of Kororāreka / Northern War, the Girls War, (old) Russell - NZ's first capital, and Russell Kororāreka's reputation as the 'Hellhole of the Pacific' and its development from a lawless whaling and trading centre of the South Pacific.



2 York St, Russell, Bay of Islands  
 Open: Daily, 10am–4pm  
 Ph: 09 403 7701  
[info@russellmuseum.org.nz](mailto:info@russellmuseum.org.nz)  
[www.russellmuseum.org.nz](http://www.russellmuseum.org.nz)

## 19 Pompallier Mission and Printery



Built in 1842, Pompallier Mission originally housed a printery where Church texts were translated from Latin to te reo Māori, then printed and bound. It is just one of several buildings, including a chapel and various outhouses, which once stood in this crowded enclave. Today the Printery stands as New Zealand's oldest industrial building, as well as the oldest of rammed-earth construction, distinctly French in style and making use of local materials including sand, rock and timber.



5 The Strand, Russell  
 Open: Daily, 10am–3:30pm  
 Ph: 09 403 9015  
[www.visitheritage.co.nz](http://www.visitheritage.co.nz)

## 20 Kawakawa Memorial Library



The Kawakawa Memorial Library was built by public subscription in 1921 by the people of Kawakawa in recognition of the lives lost in WW1. It became a Museum sanctioned by the RSA on Anzac Day 1998 following an exhibition of military photos and exhibits. It also features the life and work of Hundertwasser, displayed through an interesting video, as well as stories of the town's coal mining past.



3 Wynyard Street, Kawakawa  
 Open: Mon–Fri, 10:30am–3pm  
 Sat, 10am–3pm  
 Ph: 09 404 0406

21 Ruapekapeka Pa



Fourteen kilometres south east of Kawakawa, Ruapekapeka is one of the largest and most complex Māori pa in New Zealand. It was the site of Northland's last great battle between British troops and Ngā Puhi forces led by Hone Heke and Kawiti. The final assault on the pa took place in January 1846. The ditch and bank defences of the pa are still visible, along with one of Kawiti's cannons and the well that supplied water to the defenders. The earthen defences of the advanced British position are also still visible.



Timperley Road, Towai  
[www.ruapekapeka.co.nz](http://www.ruapekapeka.co.nz)

22 Jack Morgan Museum



Established in 2010, the newly refreshed Museum encapsulates Hukerenui's pioneering history. Visitors gain insights into local industries of this bygone era, such as mining, gum digging, farming, and more, through fascinating displays, while hearing about the locals of the era: Alice Morgan's story is woven throughout, from her family's working cowshed, to the history of the old hotel; hear soldiers' stories, find out about the region's huge floods, experience a working telephone exchange, enjoy the unique crafted kauri gum display, view the largest cream separator collection in the Southern Hemisphere and lots more!



2444 State Highway 1, Hukerenui  
 Open: Daily, 10am–3pm  
 Ph: 09 433 9521  
[www.jackmorganmuseum.org.nz](http://www.jackmorganmuseum.org.nz)

## 23 Hikurangi Historical Museum



The Hikurangi Historical Museum sits within a precinct of historic buildings: the original local Courthouse, Jail, and Council buildings. Our collection is diverse. It reflects different aspects of life from early Hikurangi and the surrounding locale, including artefacts and photographs from the area's industrial, environmental, military, social, Māori, and wider cultural histories. Interesting artefacts from our industrial history include a canary in a cage - an early warning system for coal miners, and the original 3D map of the Hikurangi Swamp Major Scheme, which speaks of the history of drainage and farming in the area.



1 Alfred Street, Hikurangi  
 Open: Tue & Thurs, 10am–11:30 am, Sat 10am–1pm & by Appointment  
 Ph: 09 433 8062  
[www.hikurangimuseum.org.nz](http://www.hikurangimuseum.org.nz)

## 24 Claphams National Clock Museum



Home to one of the largest and most historically significant collections of clocks in the Southern Hemisphere, the museum is a celebration of time, creativity and craftsmanship. Whether you are a curious traveller, a family looking for fun, or a horology enthusiast, Claphams offers a fascinating journey through the ages of timekeeping. Kids love our popular clock hunt, a playful challenge that leads them through the museum. Visitors can add to their admission experience by pre-booking a 40 minute guided tour with one of our expert and enthusiastic museum guides.



95 Dent Street, Quayside, Town Basin, Whangarei  
 Open: Daily, 9am–4.30pm  
 Ph: 09 438 3993  
 E: [info@claphamsclocks.com](mailto:info@claphamsclocks.com)

## 25 Hihiaua Cultural Centre



Māori elders and other leaders of Whangārei have long identified the need for the restoration and reinstatement of Maori culture. They declared that Whangārei needed to unleash the latent potential and build the cultural capacity and capability of Maori, particularly in our youth. Their vision was for a Māori cultural centre where identity and culture would be reclaimed, restored and renewed. Follow us on Facebook and Instagram for more info or visit [www.hihiaua.org.nz](http://www.hihiaua.org.nz)



58 Herekino St, Whangarei  
 Open: Tue–Thur 10am–4pm, Fri  
 10am–3pm, Sat & Sun 10am–  
 2pm.  
 Ph: 022 438 1943  
[www.hihiaua.org.nz](http://www.hihiaua.org.nz)

## 26 Kiwi North - Museum, Kiwi House, Heritage Park



Glimpse into Northland's past at Whangārei Museum. Discover the stories that make this region what it is today. Step back in time as you wander through the Heritage Park with mid-19th century buildings, including the original Clarke Homestead, Riponui Pah School, Jane Mander's Study, Oruaiti Chapel and Whangārei Women's Jail. Enjoy Heritage Club activities on the third Sunday of each month when you can ride trains, trams, tractors and the miniature railway. Admission includes entry to our Conservation and Native Species experience.



Gate 1, 500 SH14 Maunu,  
 Whangarei  
 Open: Daily, 10am–4pm  
 Ph: 09 438 9630  
[www.kiwinorth.co.nz](http://www.kiwinorth.co.nz)

27 Packard Motor Museum

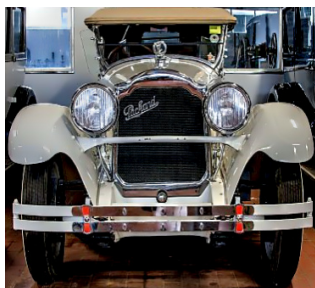


The Packard Motor Museum demonstrates the changes in automotive technology over the 20th Century.

The most significant collection is the 47 Packard motor cars ranging from 1919 through to 1958. Upstairs, visitors can view 70 classic motorcycles, dating from 1904 through to the 1990s.

The museum also displays English cars, many familiar to visitors.

The Big Boys Shed exhibits heavy machinery, including most models of Allis Chalmers Bulldozers, many Caterpillars, a military collection and International trucks.



The Old Dairy Factory,  
1146 State Highway 14,  
Maungatapere  
Open: Tue–Sat, 10am–4pm  
Ph: 09 434 8214  
[www.packardmuseum.co.nz](http://www.packardmuseum.co.nz)

28 Waipu Scottish Migration Museum



One of NZ's best little Museums and the ideal destination or stopover for visitors to Northland.

Discover the unique migration story that has received an UNESCO 'Memory of the World' listing. It tells the inspirational story of a group of hardy Scottish Highlanders who migrated to Nova Scotia and then finally settled in Waipu in 1850's. The Waipu Scottish Migration Museum is situated just 1km off State Highway 1 and easy to find on the main street of Waipu.



6 The Centre, Waipu  
Open: Daily, 10am–4pm  
Ph: 09 432 0746  
[www.waipumuseum.com](http://www.waipumuseum.com)

## Exploring, Experiencing Cultural Places

### 'Haere mai, ngā manuhiri tūārangi ki Te Tai Tokerau

We invite you to come on a journey with us to experience 'Our heritage' both the physical and non-physical, which is an important part of who we are and what we identify with, as individuals and communities. One of the things I love the most about our region is that it is not solely composed of monuments and museum collections, but also of living intangible expressions inherited from our tupuna (ancestors) and passed on to our whanau (descendants).

A great example of this is 'Te Rau Aroha' a contemporary, immersive and interactive museum located in the Treaty Grounds at Waitangi, Bay of Islands.

This space brings the stories to life of Māori commitment to the armed forces; New Zealand Wars, the Boer War, the Pioneer Battalion of World War I and the 28 (Māori) Battalion of World War II and a exhibition dedicated to the 28 (Māori) Battalion's A Company, most of whom hailed from Northland. It tells the personal stories of the soldiers and their families. The third gallery acts as a contemplative Whare Maumahara (house of memories) for visitors, descendants and whānau.

29

### Te Ahurea



Northland's living village & cultural experience. Ngāti Rēhia invite you to Te Ahurea, a unique Māori cultural and historical experience that will take you on an ancient, contemporary and futuristic journey through time.



1 Landing Road, Kerikeri  
Open in Summer from Labour weekend till March, Tues–Sun, 10am–4pm and open over the school holidays.  
Ph: 09 407 6454  
[www.teahurea.co.nz](http://www.teahurea.co.nz)

### Here are some of my top picks:

- When in Whangārei take a trip to Kiwi North. It's Northland's only Kiwi House and is set on 25 hectares of rolling farmland, forest & bush. The site features the Whangārei Museum, a nocturnal kiwi house, along with a conversation and native species experience and unique Victorian heritage buildings.
- A place I like to visit from time to time is Ruapekapeka Pa - just off SH 1. Ruapekapeka Pa was the site of the final battle in the War of the North over dissatisfaction with the Tiriti o Waitangi 1840 that continues to shape New Zealand society today.
- The Hokianga - it is one of those places that needs no explanation, you just need to be there. The natural landscape, the harbour, Māori history and the people!
- One of my favourite spots is the Far North township of Kaitiāia the gateway to Te Rerenga Wairua (Cape Reinga) place of departing spirits and Ahipara Beach, located at the southern end of 90 Mile Beach. Ahipara is home to incredible sunsets and it has one of the best left hand surf breaks in NZ. To the left of the beach is Shipwreck Bay, at low tide some of the wrecks are still visible. Above Shipwreck Bay is the Ahipara Gumfields Historic Reserve, where you can see relics from the kauri gum digging days and remnants of ancient kauri forests.
- If you love heritage buildings then plan a trip to Mangonui - a historic fishing village, which has a collection of charming 150-year-old buildings that house cafés, art and craft shops. Take a walk to picturesque Mill Bay and Rangikapiti Pā, an ancient Māori fort with commanding views.
- Drop in at the Kauri Museum on the Kauri Coast, situated in the west coast village of Matakahe, south of the Waipoua Forest, contains many exhibits that tell the story of the pioneering days, the Kauri tree story and industry. Visit, Baylys Beach, Manganui and experience numerous archaeological sites, Māori pa sites, terraces, pits and middens that are present along the rugged coast line.

Thank you for visiting our region. Whether you're here for a day or a longer stay, we hope you enjoy experiencing the culture, creativity, and hospitality of Te Tai Tokerau.

**Kia pai to haerenga ki te Te Tai Tokerau,**

**Olivia Garelja**  
Director

**CREATIVE  
NORTHLAND**



### 30 Manea Footprints of Kupe



Footprints of Kupe offers you a unique cultural encounter, journeying into Te Ao Māori, the Māori world.

Manea – Footprints of Kupe is a 5-minute multisensory journey of guided storytelling – through art, taonga (cultural treasures), film, performance, digital interaction, and the splendour of Hokianga’s natural surroundings.

The descendants of Kupe welcome you, as do the spirits of our ancestors. Enter Te Hokianga-nui-a-Kupe, our sacred cradle of tribal histories.



41 Hokianga Harbour Drive,  
Opononi  
bookings@maneafootprints.co.nz  
www.maneafootprints.co.nz

### 31 Te Honoga - Hundertwasser Memorial Park



Te Hononga is a joining place, a meeting place, a coming together of the kawakawa community and Hundertwasser, Māori and Pakeha, visitors and residents.

This rammed-earth building is a community cultural hub that brings together the library, council services, Hundertwasser Memorial Interpretive Centre, a public gallery, a community workshop, public facilities, restrooms, public carpark and Freedom Camper facilities.



The local hub preserves the local memories and legacy of Freidensreich Hundertwasser who built the world class famous public toilets in Kawakawa (1999)

56 Gillies street, Kawakawa  
Ph: 09 404 0036  
www.hundertwasserpark.com

**A Heritage Guide for  
Northland Museums Assoc.**  
*Designed and sponsored by*

**CREATIVE  
NORTHLAND**

PO BOX 959, WHANGAREI | 09 430 0710  
[www.creativenorthland.com](http://www.creativenorthland.com)  
[www.facebook.com/CreativeNorthlandNZ](https://www.facebook.com/CreativeNorthlandNZ)

**This is a Creative Northland printed publication**